



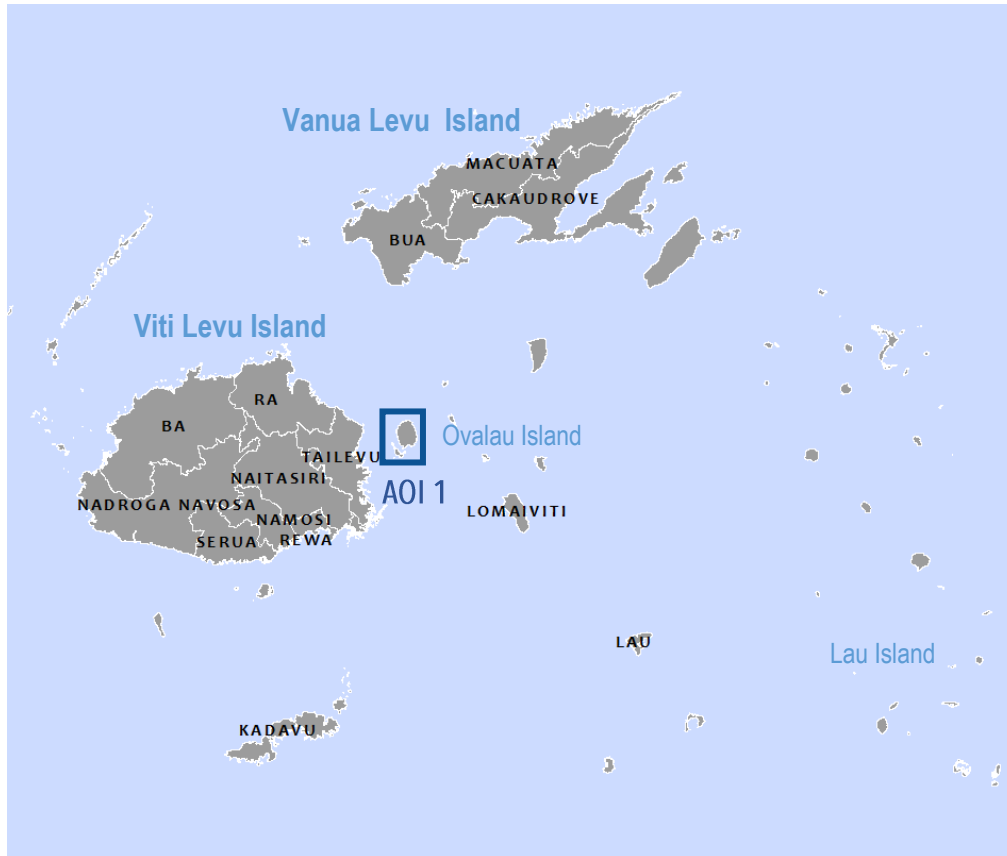
24 DECEMBER 2020




**PRELIMINARY SATELLITE-DERIVED DAMAGE ASSESSMENT
OVALAU ISLAND, LOMAIVITI PROVINCE, EASTERN DIVISION, FIJI**

STATUS: NO WIDESPREAD DAMAGE DETECTED



OVERVIEW / BASED ON AOIs ASSESSED



-  AREA OF INTEREST (AOI)
-  SEA
-  ISLAND BOUNDARY

Date of assessment validity: 24 December 2020

Impact and severity*:

- undetected
- limited impact potentially detected
- significant impact potentially detected

Potentially affected elements at risk

(indicate all that are applicable):

- buildings – residential
- buildings – commercial/ industry
- vulnerable structures (e.g. schools, hospitals, water, sanitation, power stations,
- internally displaced persons (IDP) camps
- transportation network
- agriculture
- other:

Data sources:

(1) Pre-event (reference) image:
WorldView-2/ 31 January 2020

Copyright :2020 Digital Globe
Source : USGS-HDDS

(2) Post-event images:
WorldVlew-2/ 22 December 2020

Copyright: 2020 Digital Globe
Source: USGS-HDDS

(3) Baseline data:
Fiji Islands Bureau of Statistics

* disclaimer (i.e. assessment yet to be validated with field-based information)

AOI 1-1 TOKUA, OVALAU ISLAND, FIJI: NO DAMAGE OBSERVED



 Image Boundary

Image Center :
178°49'56.463"E
17°42'49.974"S



WorldView-2/ 31 January 2020



WorldView-2 / 22 December 2020

AOI 1-2 LEVUKA PORT TOWN, OVALAU ISLAND, FIJI ISLAND: NO DAMAGE OBSERVED



Ovalau Island



Image Boundary

Image Center :
178°49'56.231"E
17°40'54.069"S



WorldView-2/ 31 January 2020



WorldView-2 / 22 December 2020

AOI 1-3 NAOUOU, OVALAU ISLAND, FIJI ISLAND: NO DAMAGE OBSERVED

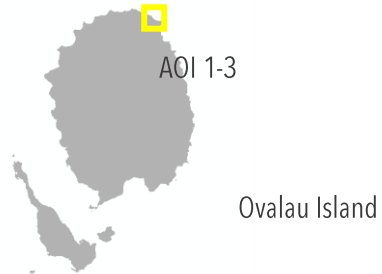
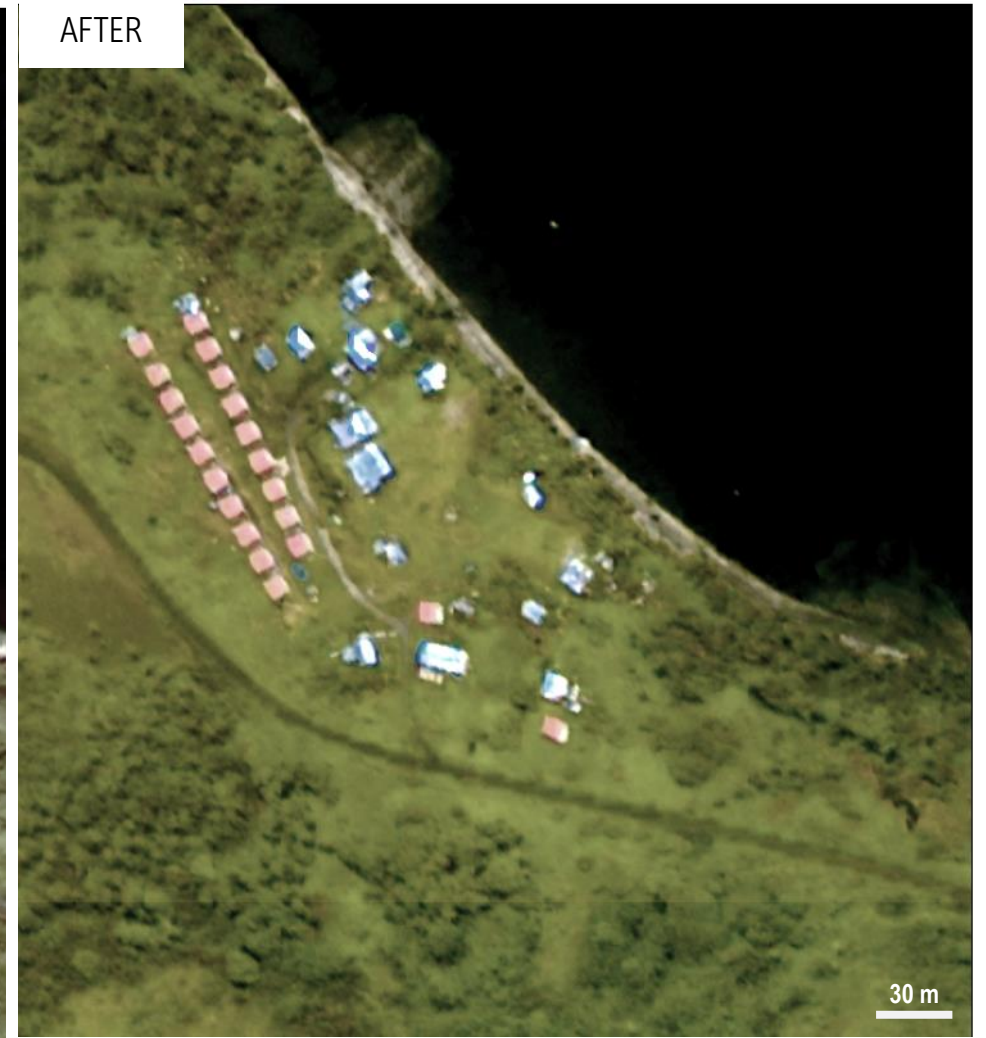


 Image Boundary

Image Center :
178°48'32.099"E
17°37'31.189"S



WorldView-2/ 31 January 2020



WorldView-2 / 22 December 2020

AOI 1-4 TAVIYA, OVALUA ISLAND, FIJI ISLAND: NO DAMAGE OBSERVED

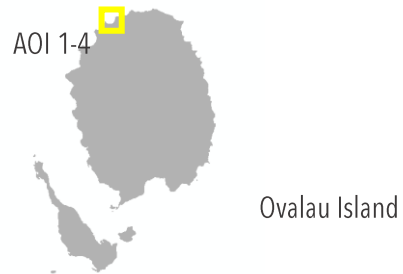


Image Center :
178°46'1.25"E
17°37'42.288"S



WorldView-2/ 31 January 2020



WorldView-2 / 22 December 2020

SUMMARY OF PRELIMINARY OBSERVATIONS AND FURTHER ACTIONS

Date of assessment validity : 24 December 2020

Maps: <http://www.unitar.org/maps>
Email: unosat@unitar.org
Operations: +41 22 767 4020
24/7 hotline: + 41 75 411 4998

- No widespread damage detected

Further/ anticipated actions from UNOSAT:

- no impact detected/ discontinue monitoring over specific AOI
- potential impact detected continue monitoring over specific AOIs full assessment to be conducted
- more data and/ or information needed to confirm impact

* disclaimer (i.e. assessment yet to be validated with field-based information)