

# Flooding Situation along Shebelle river, Southern Somalia



# Shebelle river area – 12-13-14 May 2018 – Analyzed towns



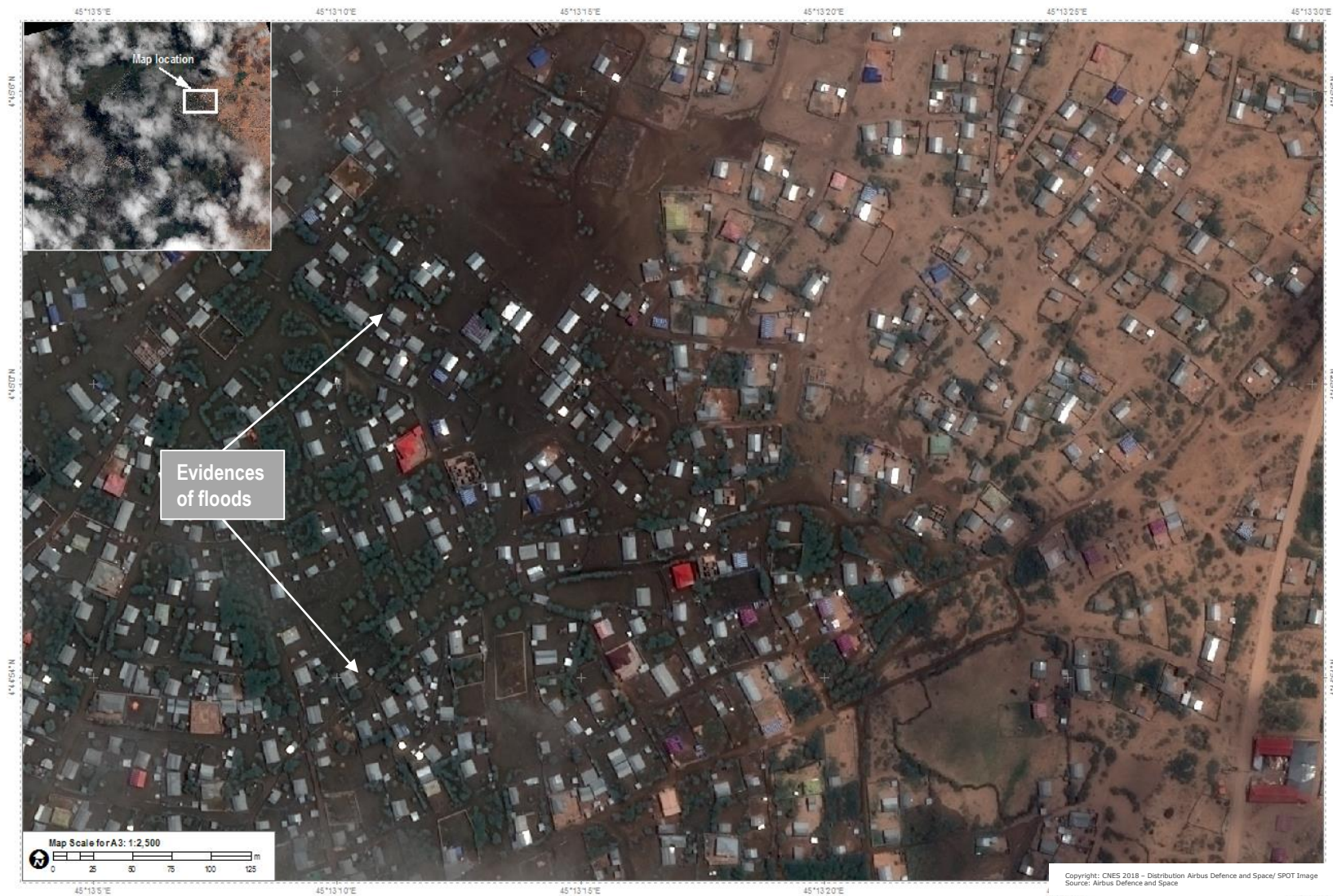


# Upper Shebelle River – Beledweyne (13 May 2018)





# Upper Shebelle River – Beledweyne (13 May 2018)





# Middle Shebelle River – Bulo Burto/Buulobarde (13 May 2018)





# Middle Shebelle River – Bulo Burto/Buulobarde (13 May 2018)



Copyright: CNES 2018 – Distribution Airbus Defence and Space/ SPOT Image  
Source: Airbus Defence and Space



# Middle Shebelle River – Jowhar (14 May 2018)





# Middle Shebelle River – Jowhar (14 May 2018)





# South Shebelle River – Afgooye (14 May 2018)





# South Shebelle River – Afgooye (14 May 2018)





- **04 towns along the Shebelle River were analysed using VHR Pléiades satellite images,**
- **Several flooded areas in Beledweyne, standing waters observed in the 04 analysed towns, some areas are in receding phase particularly downstream,**
- **Some agricultural fields appear to be still flooded,**
- **Beledweyne appears to be the most affected town as of 14 May 2018,**
- **This is a preliminary analysis and has not yet been validated in the field.**





unitar

United Nations Institute for Training and Research

United Nations Institute for Training and Research  
Institut des Nations Unies pour la Formation et la Recherche  
Instituto de las Naciones Unidas para Formación Profesional e Investigaciones  
Учебный и научно-исследовательский институт  
Организации Объединенных Наций  
معهد الأمم المتحدة للتدريب والبحث  
联合国训练研究所



UNITAR  
International Environment House  
Chemin des Anémones 11-13,  
CH-1219 Châtelaine,  
Geneva - Switzerland  
T +41 22 917 8400  
F +41 22 917 8047  
[www.unitar.org](http://www.unitar.org)