



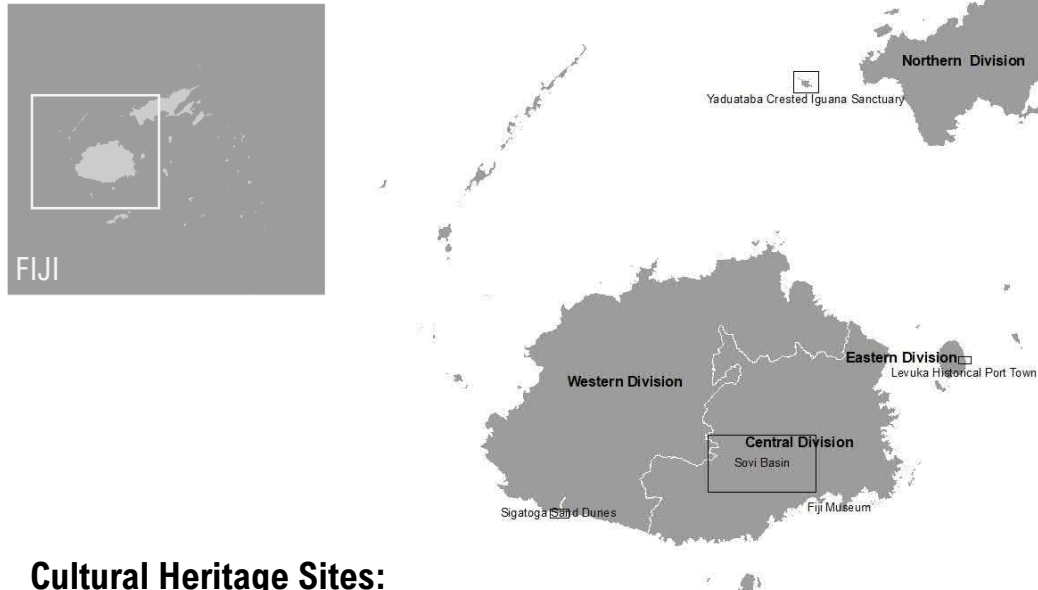
23 APRIL 2020

**PRELIMINARY SATELLITE-DERIVED DAMAGE ASSESSMENT
CENTRAL DIVISION, REPUBLIC OF FIJI**

STATUS: No visible damage detected

FURTHER ACTION: NO IMPACT DETECTED / DISCONTINUE
MONITORING

OVERVIEW / BASED ON AOIs ASSESSED



Date of assessment validity:

22 April 2020

Impact and severity*:

- undetected
- limited impact potentially
- significant impact potentially

Data sources:

(1) pre-event (reference) image:
WorldView-2 / 28 January, 24 February and GeoEye-1 / 22 February 2020

(2) post-event images:
GeoEye-1 / 11 April 2020, WorldView-1 / 15 April 2020 and WorldView-3 / 22 April 2020
Copyrights: 2020 DigitalGlobe Inc.
Source: USGS/HDDS

Potentially affected elements at risk
(indicate all that are applicable):

- buildings - residential
- buildings - commercial/ industry
- vulnerable structures (e.g. schools, hospitals, water, sanitation, power)
- internally displaced persons (IDP)
- transportation network
- agriculture
- other:

- (3) Baseline data
- Administrative boundaries: OCHA ROP
 - UNESCO World Heritage sites and Tentative List sites data

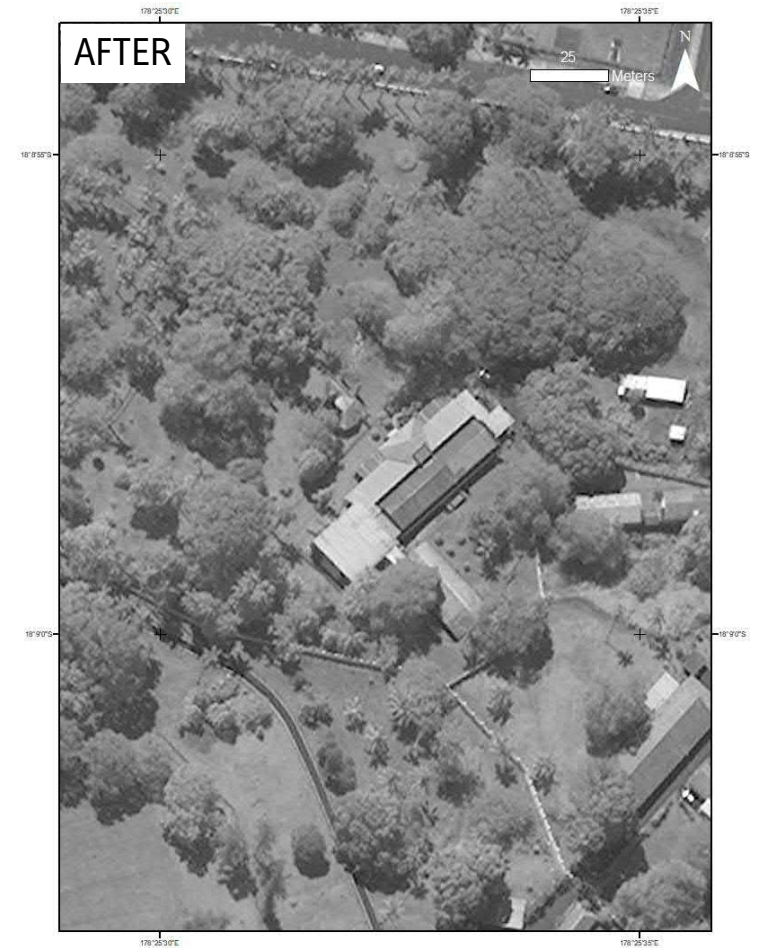
Cultural Heritage Sites:

- (1) Levuka Historical Port Town - no imagery
- (2) Sigatoka Sand Dunes - assessed**
- (3) Sovi Basin - assessed**
- (4) Yaduataba Crested Iguana Sanctuary – no imagery
- (5) Fiji Museum - assessed**

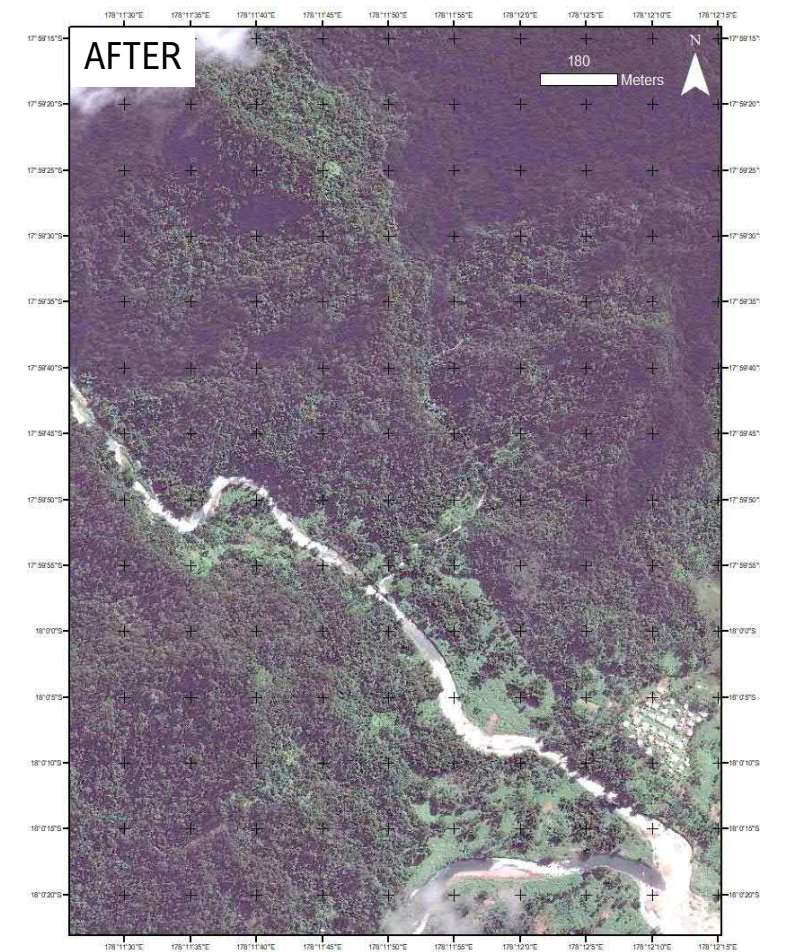
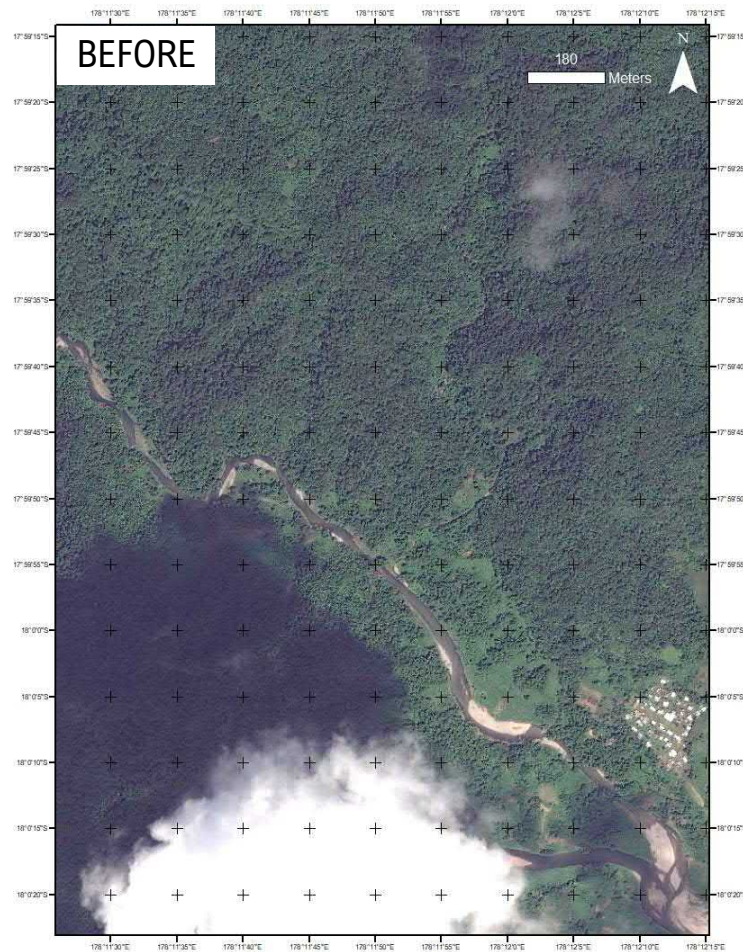
- AREA OF INTEREST (AOI)
- REGIONS

* disclaimer (i.e. some assessments has yet to be validated with field-based information).

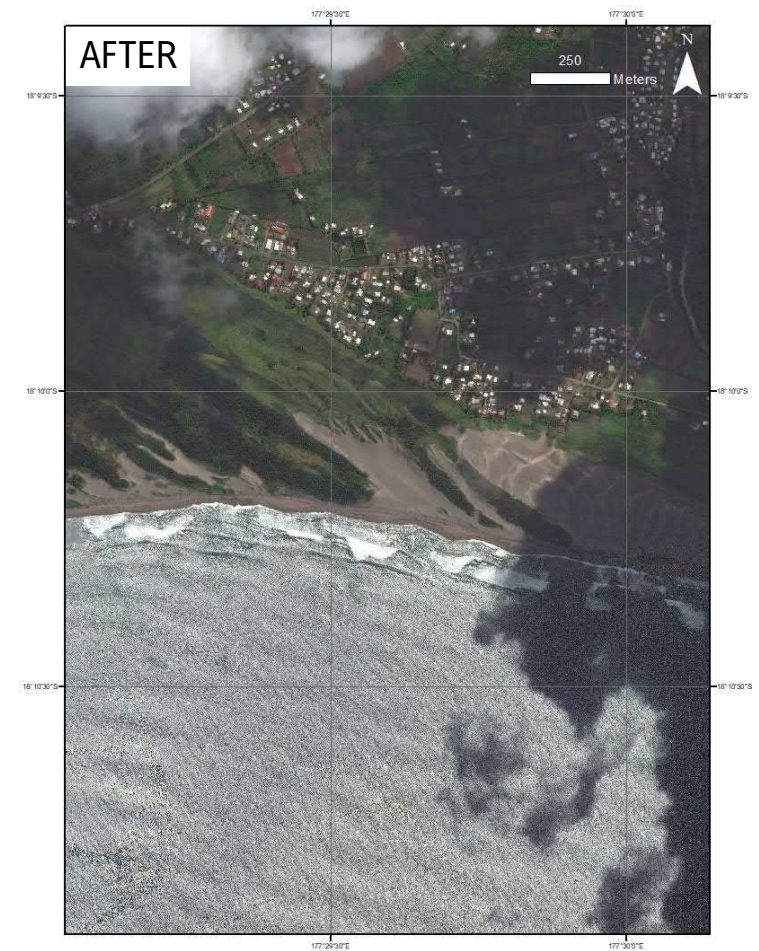
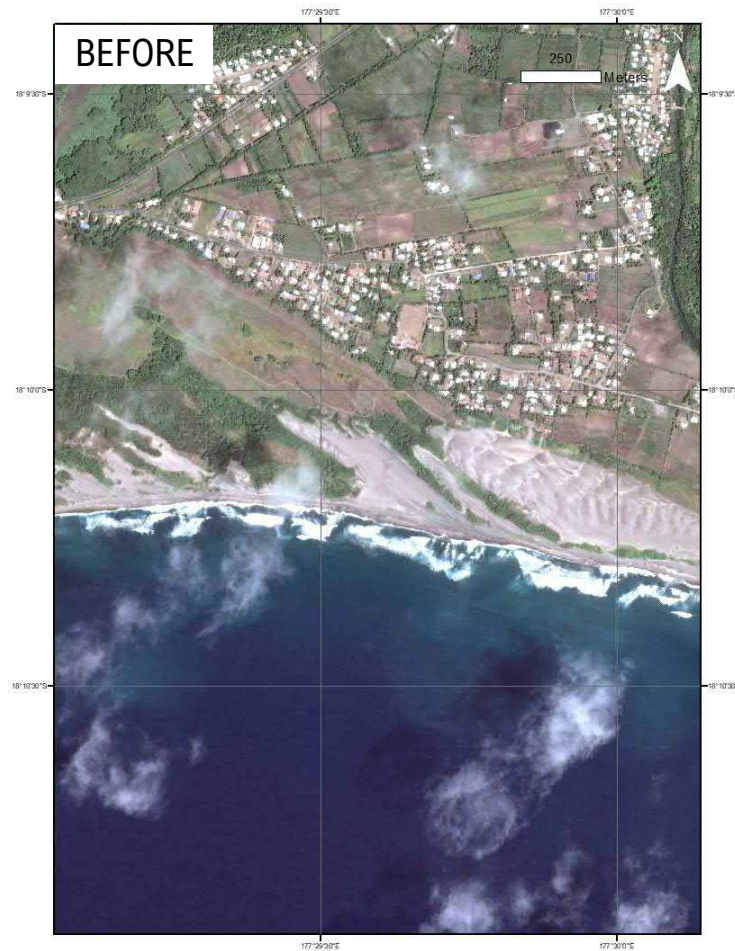
FIJI MUSEUM - SUVA CENTRAL CITY, REWA PROVINCE, FIJI : NO VISIBLE DAMAGE



SOVI BASIN PROTECTED AREA- VITI LEVU PROVINCE, FIJI : NO VISIBLE DAMAGE



SIGATOKA SAND DUNES – SIGATOKA, VITI LEVU PROVINCE, FIJI : NO VISIBLE DAMAGE



SUMMARY OF PRELIMINARY OBSERVATIONS AND FURTHER ACTIONS

Date of assessment validity: 23 April 2020

Palais des Nations, CH-1211 Geneva 10,
Switzerland
Maps: <http://www.unitar.org/ma>
Email: ps
Operations: unosat@unitar.org
24/7 hotline: +41 22 767 4020
+ 41 75 411 4998

Preliminary observations, impact and severity *:

- No visible structural damage to the Fiji Museum on Central Suva City as of 15 April 2020;
- No deforestation or major floods/inundations within the cloud-free visible area in the Sovi Basin Protected Area as of 11 April 2020.
- No coastal erosion or sand dune volume degradation within the cloud-free area of the Sigatoka Sand Dunes as of 22 April 2020.

Further/ anticipated actions from UNOSAT:

- no impact detected/ discontinue monitoring over specific AOI
- potential impact detected continue monitoring over specific full assessment to be conducted
- more data and/ or information needed to confirm impact severity on
- Continue monitoring other areas of interest until images are available.

* disclaimer (i.e. assessment has yet to be validated with field-based information)