



22 APRIL 2020

**PRELIMINARY AGRICULTURE DAMAGE ASSESSMENT
PENTECOST ISLAND, VANUATU**

STATUS: EVIDENCES OF DAMAGED BUILDING DETECTED

FURTHER ACTION(S): CONTINUE MONITORING



OVERVIEW / BASED ON AOIs ASSESSED



Date of assessment validity:

Impact and severity*:

- undetected
- limited impact potentially detected
- significant impact potentially detected

Potentially affected elements at risk (indicate all that are applicable):

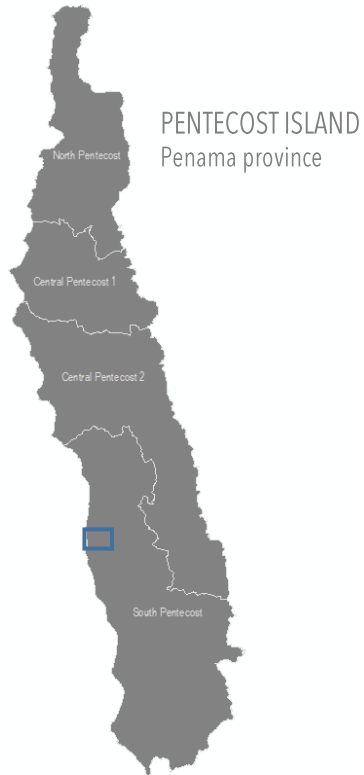
- buildings - residential
- buildings - commercial/industry
- vulnerable structures (e.g. schools, hospitals, water, sanitation, power stations, etc.)
- internally displaced persons (IDP) camps
- transportation network
- agriculture
- other:

Data sources:

- (1) pre-event (reference) image:
 - ESRI Base map
- (2) post-event images:
 - WorldView-2, 9 April 2020 [2020 Digital Globe]
- (3) baseline data
 - Administrative boundaries: OCHA ROP

* disclaimer (i.e. assessment has yet to be validated with field-based information)

AOI 1 SOUTH PENTECOST MUNICIPALITY, PENAMA PROVINCE, VANUATU : DAMAGED COCONUT PLANTATION



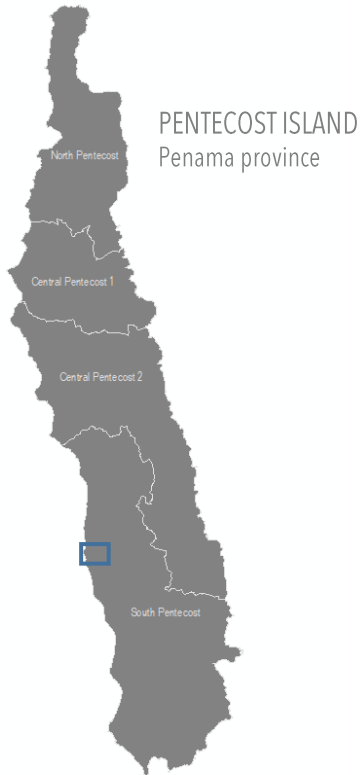
ESRI Base Map



WorldView-2 / 9 APRIL 2020

Image Center :
168°10'14.492"E
15°50'18.74"S

AOI 1 SOUTH PENTECOST MUNICIPALITY, PENAMA PROVINCE, VANUATU : DAMAGED COCONUT PLANTATION



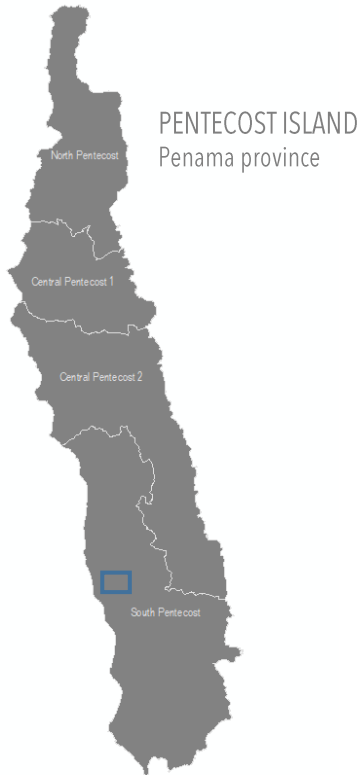
ESRI Base Map



WorldView-2 / 9 APRIL 2020

Image Center :
168°10'12.626"E
15°50'59.474"S

AOI 1 SOUTH PENTECOST MUNICIPALITY, PENAMA PROVINCE, VANUATU : DAMAGED COCONUT PLANTATION



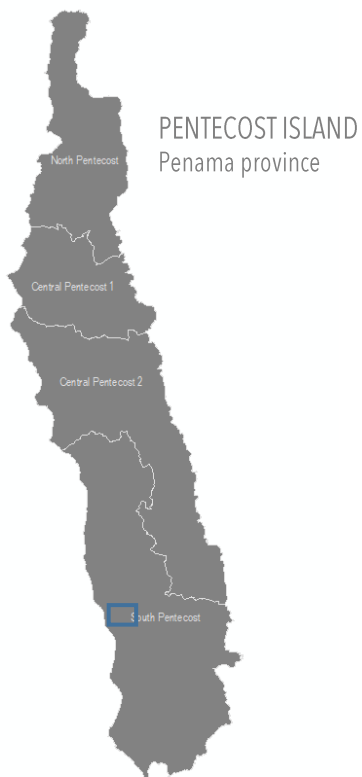
ESRI Base Map



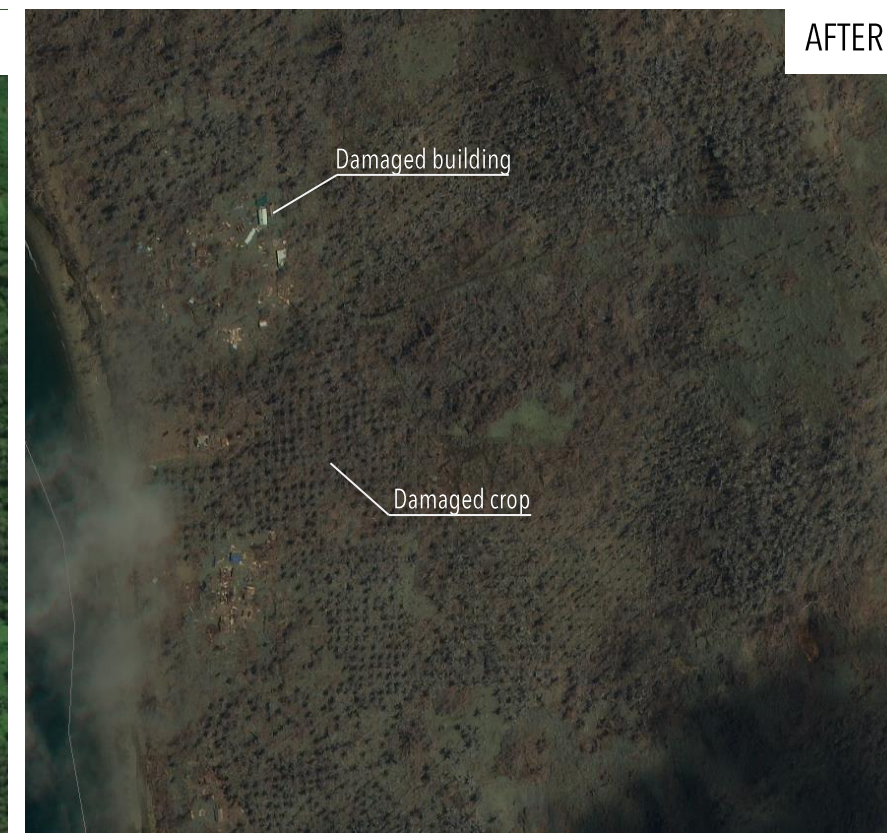
WorldView-2 / 9 APRIL 2020

Image Center :
168°10'54.231"E
15°52'27.785"S

AOI 1 SOUTH PENTECOST MUNICIPALITY, PENAMA PROVINCE, VANUATU : DAMAGED COCONUT PLANTATION



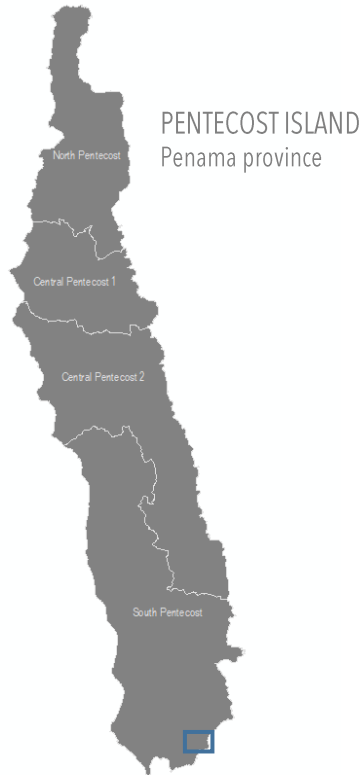
ESRI Base Map



WorldView-2 / 9 APRIL 2020

Image Center :
168°11'1.316"E
15°53'24.475"S

AOI 1 SOUTH PENTECOST MUNICIPALITY, PENAMA PROVINCE, VANUATU : DAMAGED COCONUT PLANTATION



ESRI Base Map



WorldView-2 / 9 APRIL 2020

Image Center :
168°11'11.628"E
15°58'45.144"S

AOI 1 SOUTH PENTECOST MUNICIPALITY, PENAMA PROVINCE, VANUATU : POTENTIALLY DAMAGED TARO PLANTATION

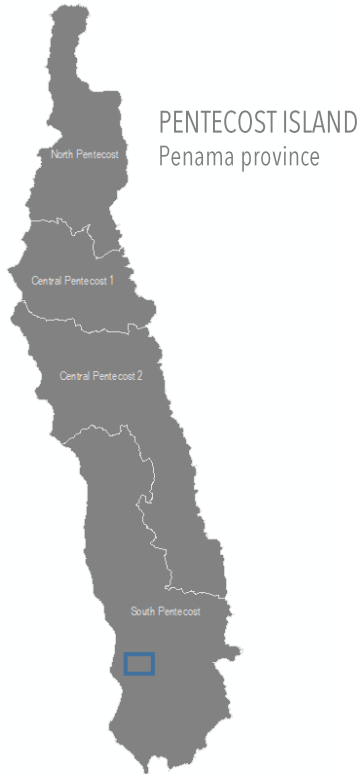
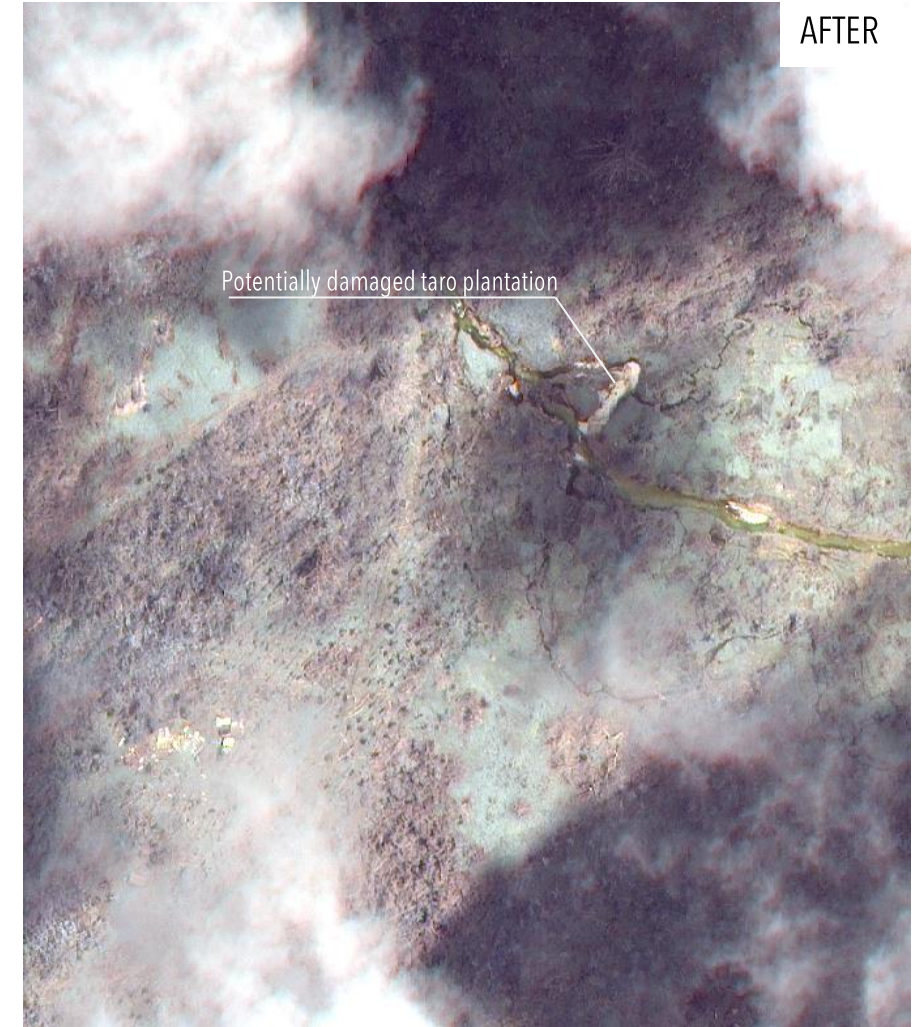


Image Center :
168°11'37.395"E
15°56'13.174"S



ESRI Base Map



WorldView-2 / 9 APRIL 2020

SUMMARY OF PRELIMINARY OBSERVATIONS AND FURTHER ACTIONS

Date of assessment validity: 22 APRIL 2020

Preliminary observations, impact and severity *:

- Damaged plantations have been observed along the coastal area in South Pentecost Municipality (Vanuatu) as of 09 April 2020;
- Dam and water distribution channels/ditches have been affected according to satellite observations and ground observations in Taro plantations areas of the southern parts of Pentecost.

Further/ anticipated actions from UNOSAT:

- no impact detected/ discontinue monitoring over specific AOI
- potential impact detected continue monitoring over specific AOIs full assessment to be conducted
- more data and/or information needed to confirm impact severity

1

* disclaimer (i.e. assessment has yet to be validated with field-based information)