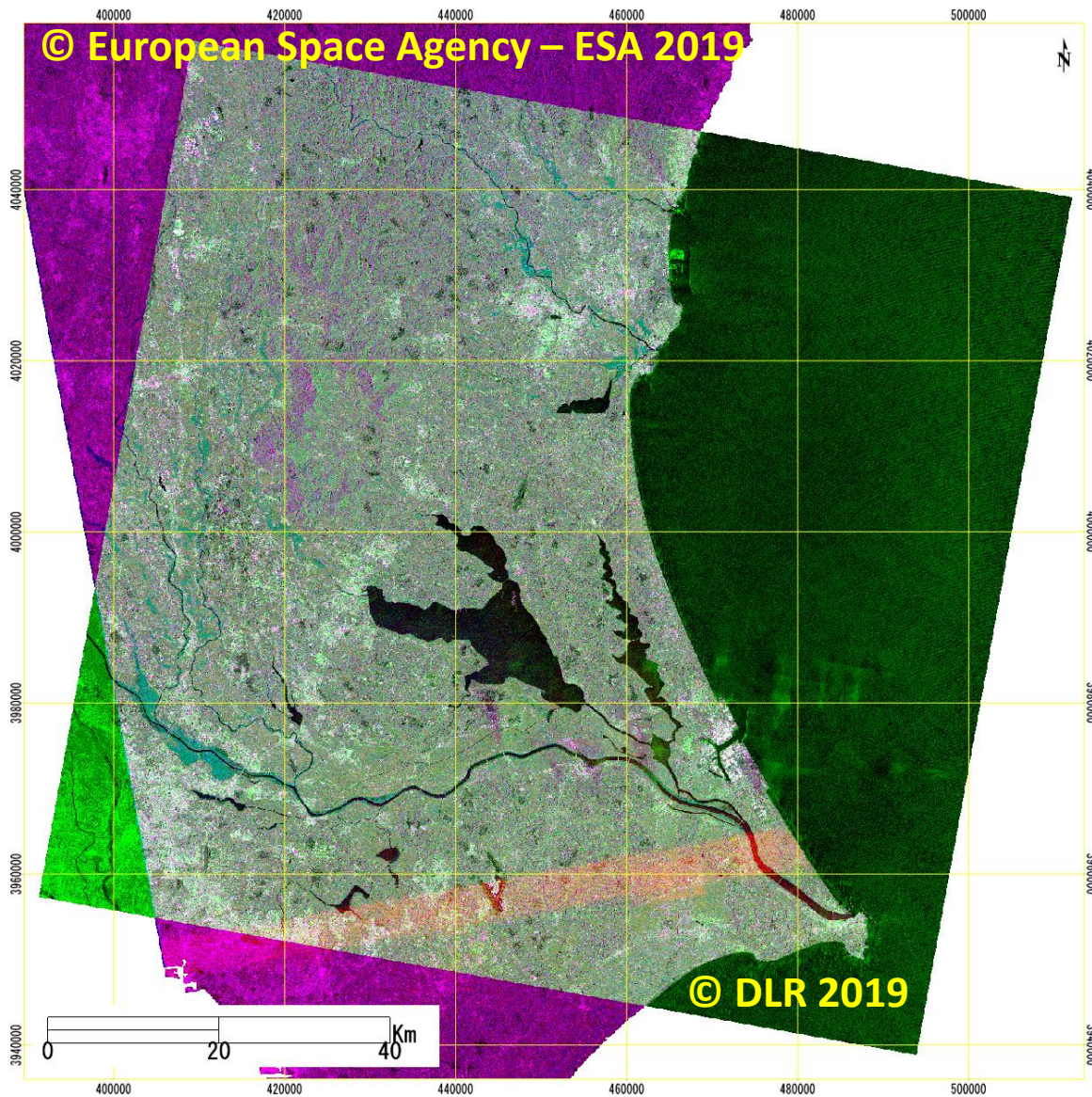


Sentinel-1 (S1) imagery TerraSAR-X (TSX) imagery

ID: 2019-038-JPN
Typhoon No. 19 in 2019

Color composite of three-temporal
SAR intensity image, spacing in
10m/pixel resolution.

TerraSAR-X image was owned by
DLR, provided through International
Charter and JAXA.
Sentienl-1 image was owned by ESA
downloaded from OpenHub.



B: S1 (17:33 JST on Oct. 7, 2019)
G: TSX (05:44 JST on Oct. 12, 2019)
R: S1 (17:34 on Oct. 13, 2019)



Sentinel-1 (S1) imagery TerraSAR-X (TSX) imagery

ID: 2019-038-JPN

Typhoon No. 19 in 2019

Water extraction from three-temporal SAR intensity images.

Water was extracted by the thresholding value

$$W_{dB} > \mu_w + 2\sigma_w$$

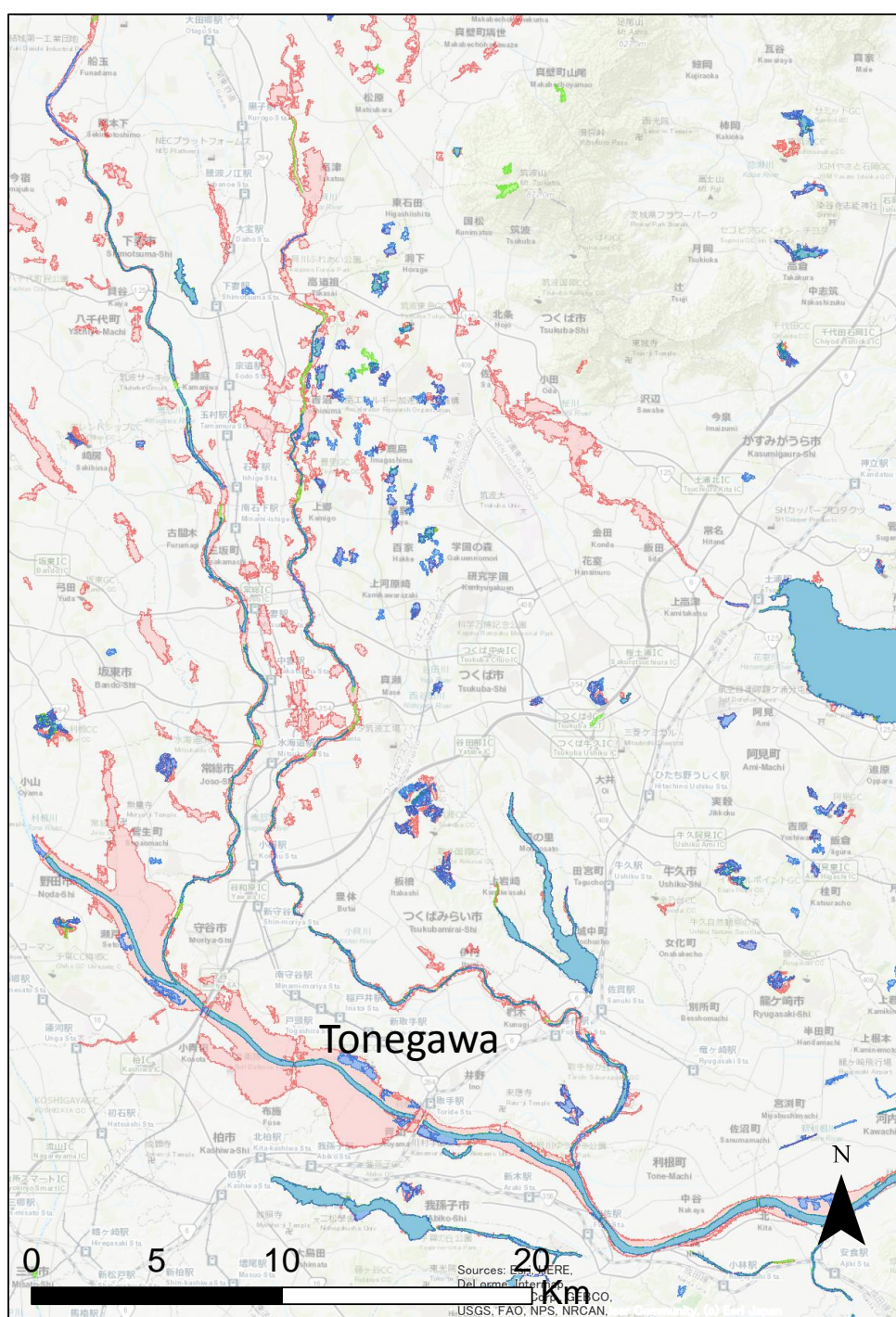
The water sample was selected from Kasumigaura Lake.

TerraSAR-X image was owned by DLR, provided through International Charter and JAXA.

Sentinel-1 image was owned by ESA, downloaded from OpenHub.

Water regions

- S1 (17:33 JST on Oct. 7, 2019)
- TSX (05:44 JST on Oct. 12, 2019)
- S1 (17:34 on Oct. 13, 2019)



esa

European Space Agency



CHIBA
UNIVERSITY

Sentinel-1 (S1) imagery TerraSAR-X (TSX) imagery

ID: 2019-038-JPN

Typhoon No. 19 in 2019

Water extraction from three-temporal SAR intensity images.

Water was extracted by the thresholding value

$$W_{dB} > \mu_w + 2\sigma_w$$

The water sample was selected from Kasumigaura Lake.

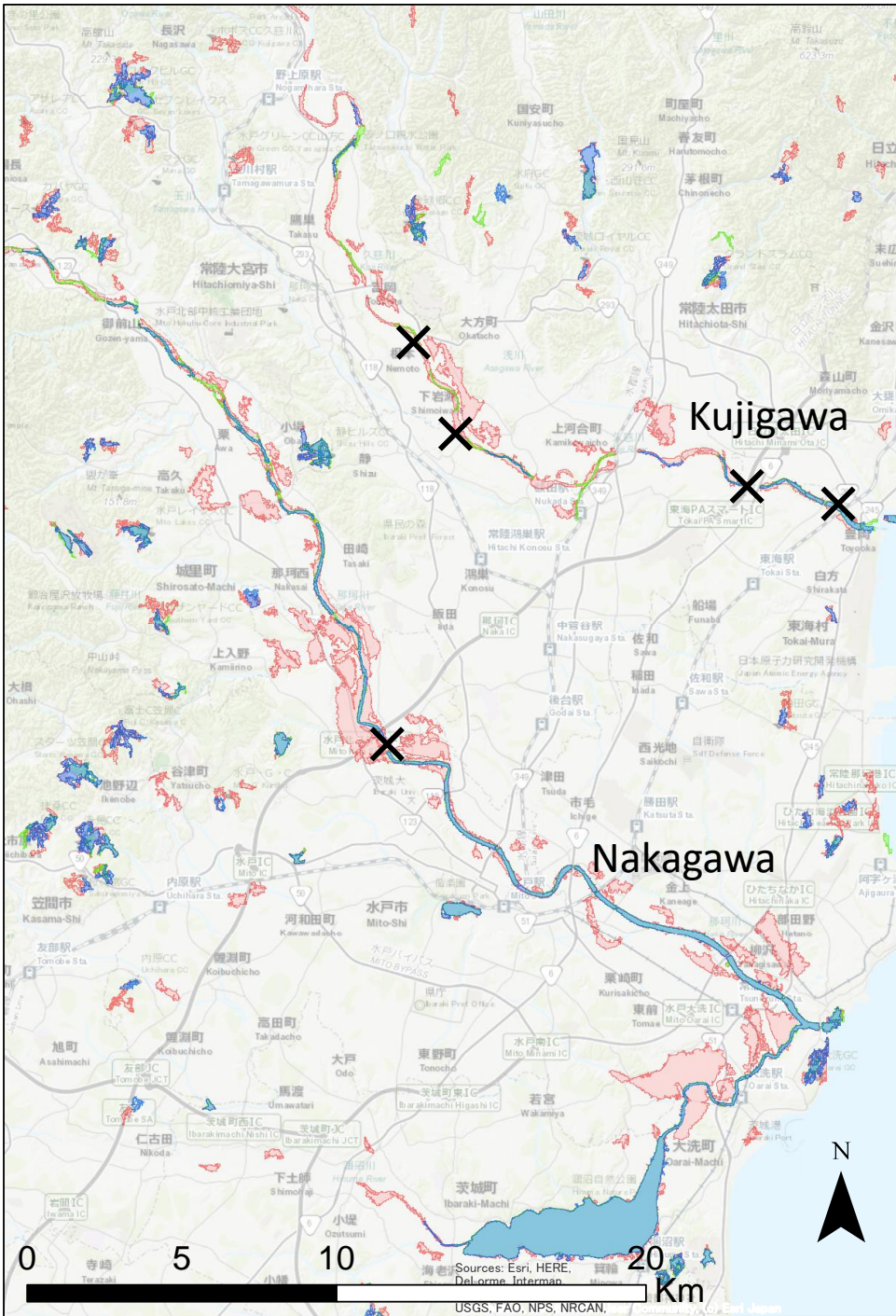
TerraSAR-X image was owned by DLR, provided through International Charter and JAXA.

Sentinel-1 image was owned by ESA, downloaded from OpenHub.

Water regions

- S1 (17:33 JST on Oct. 7, 2019)
- TSX (05:44 JST on Oct. 12, 2019)
- S1 (17:34 on Oct. 13, 2019)

✕ Locations of the bank broken from MLIT



Sources: Esri, HERE, DeLorme, Intermap, USGS, FAO, NPS, NRCAN, Esri Japan