



2 September 2024

PRELIMINARY SATELLITE-DERIVED FLOOD IMPACT ASSESSMENT




Lakshmipur City, Lakshmipur District, Chattogram Division, Bangladesh

 Status: Inundated structures/houses and croplands observed.

 Further action(s): Continue monitoring

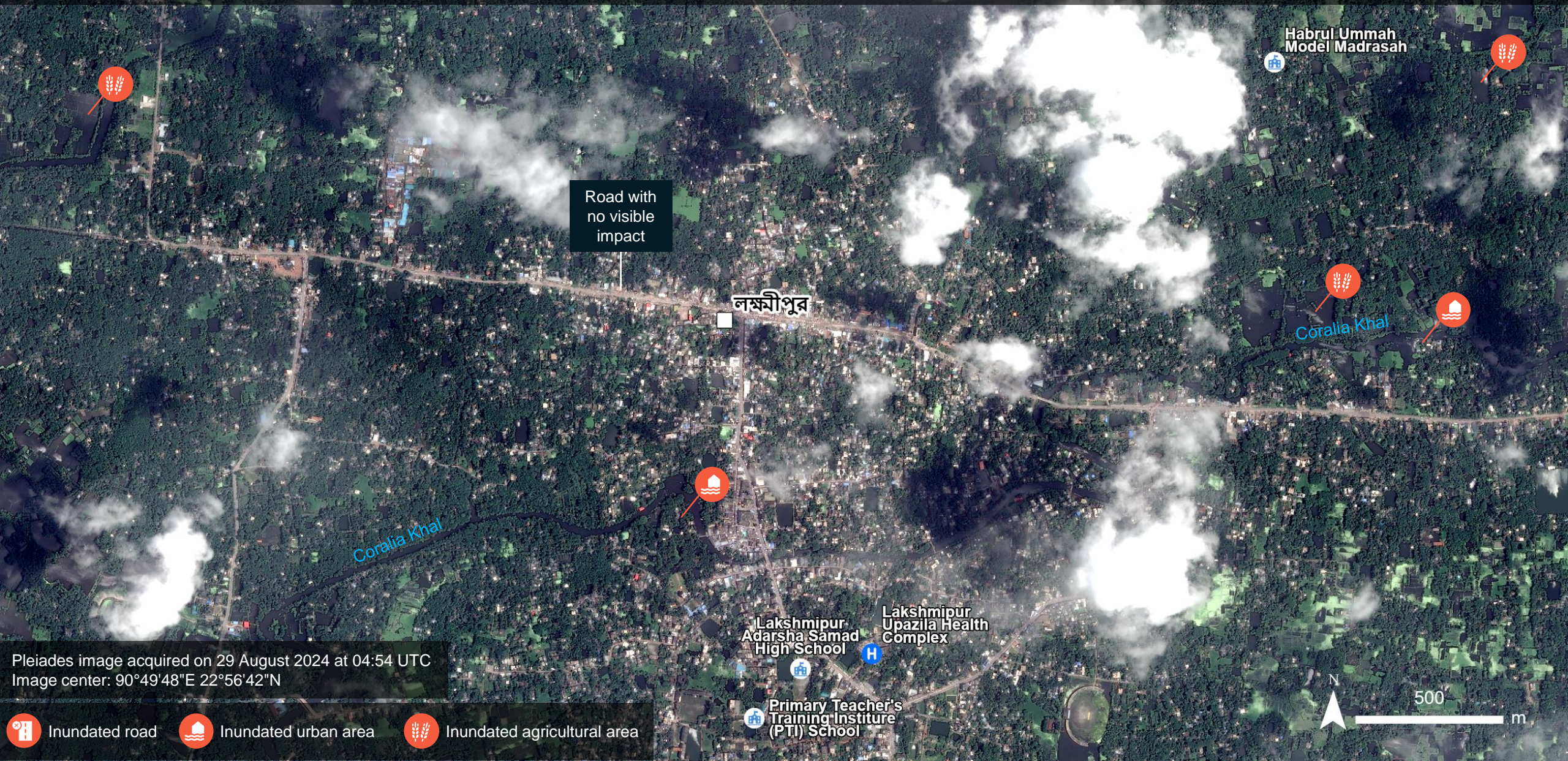
Bangladesh



 Area of interest

LAKSHMIPUR CITY, LAKSHMIPUR DISTRICT, CHATTROGRAM DIVISION

Inundated structures/houses and croplands



Road with no visible impact

লক্ষ্মীপুর

Habrul Ummah Model Madrasah

Coralia Khal

Lakshmipur Adarsha Samad High School

Lakshmipur Upazila Health Complex

Primary Teacher's Training Institute (PTI) School

Pleiades image acquired on 29 August 2024 at 04:54 UTC
Image center: 90°49'48"E 22°56'42"N

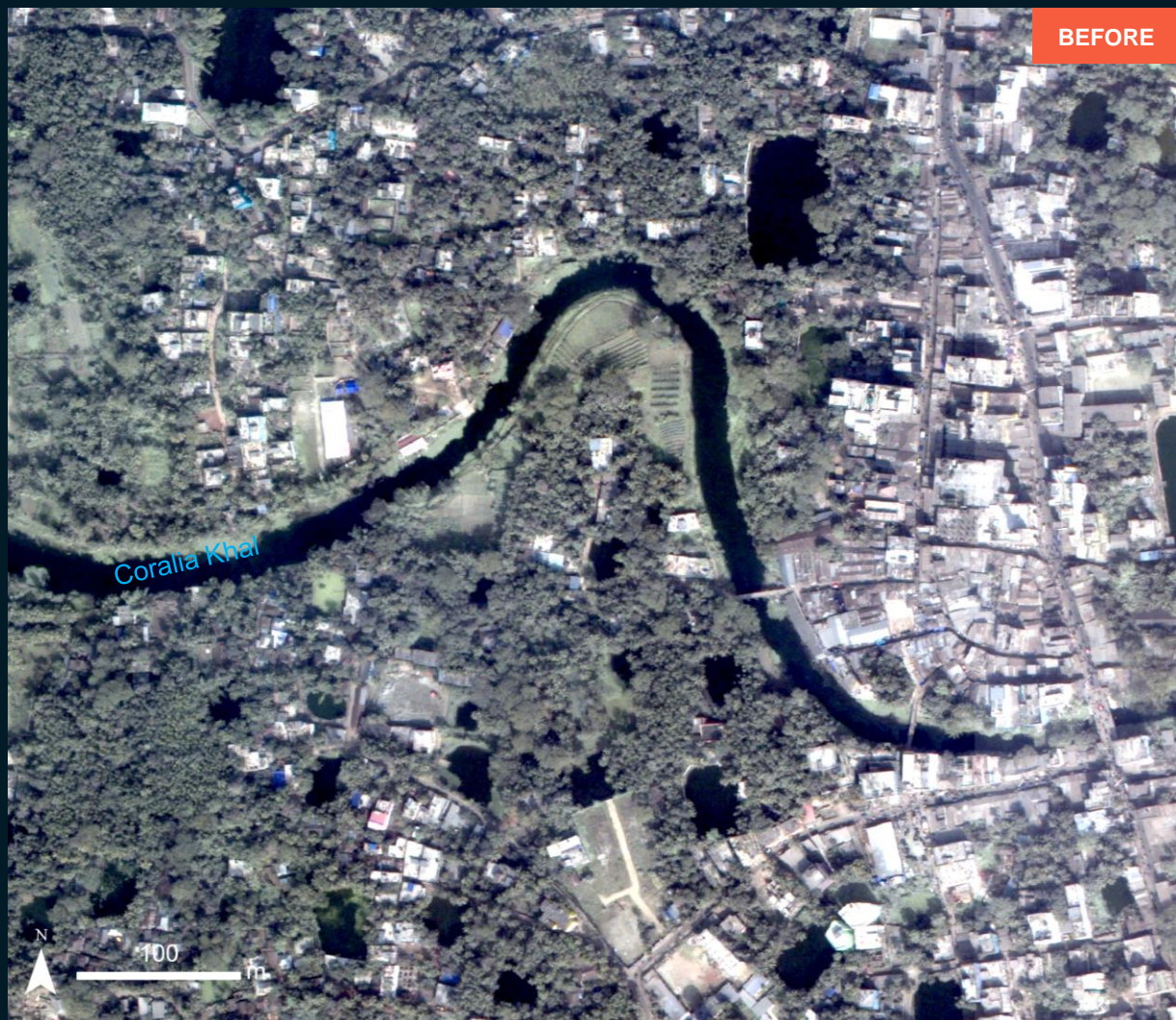
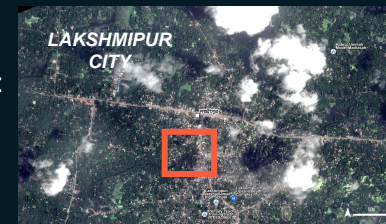
- Inundated road
- Inundated urban area
- Inundated agricultural area



AOI2- LAKSHMIPUR CITY, LAKSHMIPUR DISTRICT, CHATTROGRAM DIVISION

Inundated structures/houses

Image center:
XXXXX



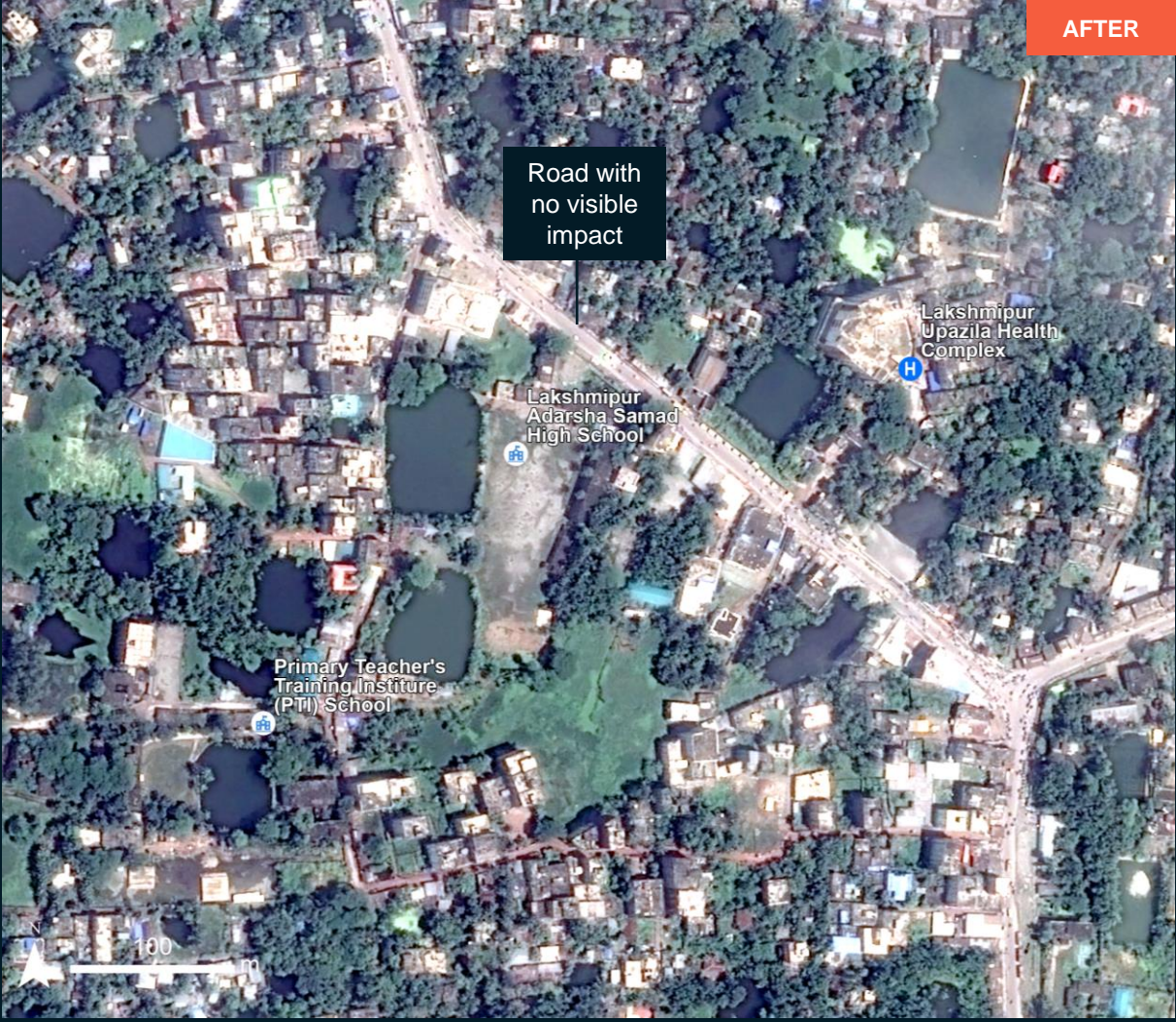
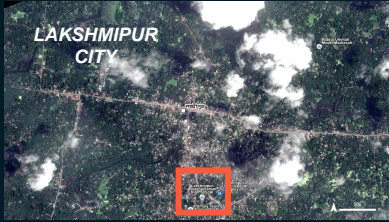
WorldView-3 / 2 March 2023

Pleiades / 31 August 2024

AOI2- LAKSHMIPUR CITY, LAKSHMIPUR DISTRICT, CHATTROGRAM DIVISION

No major flood observed

Image center:
90°49'51"E
22°56'1"N



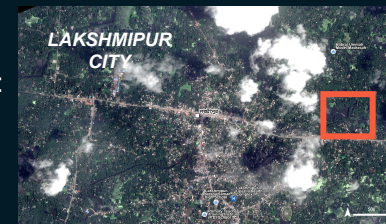
WorldView-3 / 4 February 2023

Pleiades / 31 August 2024

AOI3- LAKSHMIPUR CITY, LAKSHMIPUR DISTRICT, CHATTROGRAM DIVISION

Inundated structures/houses and croplands

Image center:
90°50'57"E
22°56'45"N



WorldView-3 / 4 February 2023



Pleiades / 31 August 2024

AOI3- LAKSHMIPUR CITY, LAKSHMIPUR DISTRICT, CHATTROGRAM DIVISION

Inundated structures/houses and croplands

Image center:
90°50'52"E
22°57'7"N



WorldView-3 / 4 February 2023



Pleiades / 31 August 2024

AOI3- LAKSHMIPUR CITY, LAKSHMIPUR DISTRICT, CHATTROGRAM DIVISION

Inundated structures/houses and croplands

Image center:
90°48'45"E
22°57'8"N



BEFORE



AFTER

WorldView-3 / 4 February 2023

Pleiades / 31 August 2024

SUMMARY OF FINDINGS

- Inundated structures/houses and croplands have been observed in Lakshmipur city and the surrounding areas as of August 31, 2024,

COPYRIGHTS & SOURCES

Data sources:

(1) Post image

Satellite Data: Pleiades

Imagery Dates: 31 August 2024 at 04:54 UTC

Resolution : 50cm

Copyright : CNES (2024), distribution Airbus D&S

Source : Airbus D&S

(2) Pre-image

Satellite Data : WorldView-3

Imagery Dates: 4 February 2023

Resolution : 30 cm

Copyright: © (2024) DigitalGlobe, Inc., Longmont CO USA 80503.

DigitalGlobe and the DigitalGlobe logos are trademarks of DigitalGlobe, Inc.

The use and/or dissemination of this data and/or of any product in any way derived there from are restricted. Unauthorized use and/or dissemination is prohibited

Source: USGS

(3) Ancillary data

Boundary data: Bangladesh Bureau of Statistics (BBS)

Populated place: OpenStreetMap

Waterways: OpenStreetMap

Analysis: United Nations Satellite Centre (UNOSAT)

Production: United Nations Satellite Centre (UNOSAT)

 **@UNOSAT**

 **@UNITAR.unosat**

 **/UNOSAT**



UNOSAT, United Nations Institute for Training
and Research (UNITAR)
7 bis, Avenue de la Paix, CH-1202 Geneva 2,
Switzerland

T +41 22 917 4720
E unosat@unitar.org
www.unosat.org