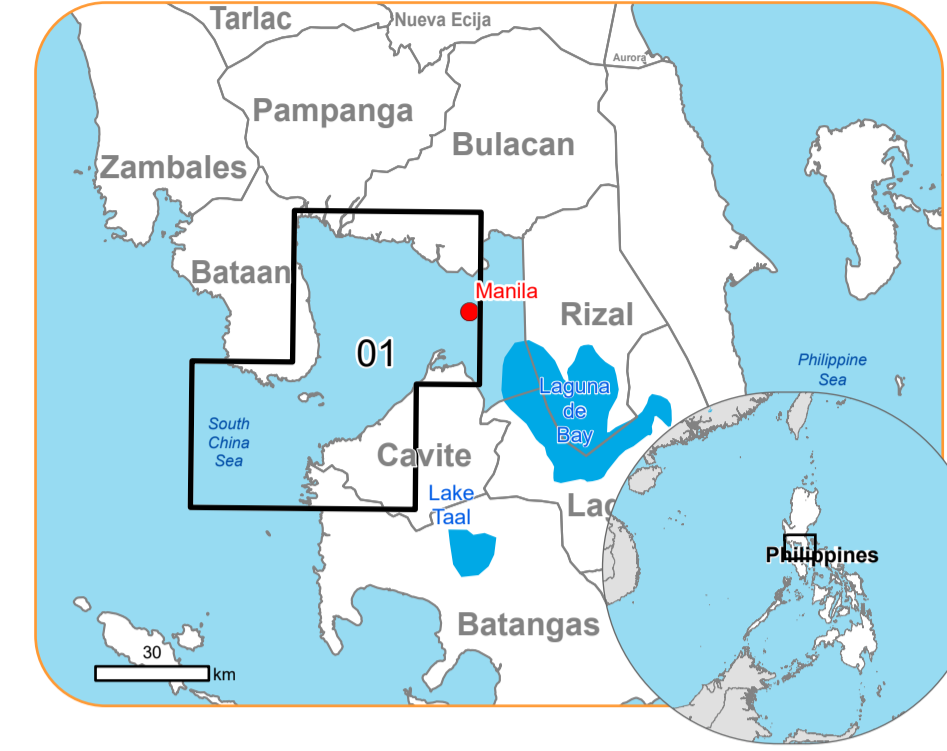


EMSR741 - AOI01
 Other in Philippines
MANILA BAY

Situation as of 25/07/2024 21:40 UTC
 Delineation - Overview map 01



Oil Spill
 1,500.9 ha

Potentially affected population
 ~ Not Available

- | | |
|---|------------------------------------|
| Crisis Information | Local pipelines or lines |
| Oil Spill | Water or Aquatic infrastructure |
| General Information | Dam |
| Area of Interest | Mining or extraction site |
| Image Footprint | Power plant |
| Not Analysed | Sport and recreation constructions |
| Placenames | Dump Site |
| Placename | Water or Aquatic infrastructure |
| Built-Up Area | Dam |
| Residential | Transportation |
| Non residential | Highway |
| School, university and research buildings | Main road |
| Hospital or institutional care buildings | Local road |
| Military | Railway |
| Hydrography | Airfield runway |
| Lake, River | Subway |
| Facilities | Transportation |
| Long-distance pipelines or lines | Airfield |
| | Helipad |

Event: On the morning of 25 July 2024, a Philippine tanker, the MT Terra Nova, capsized in Manila Bay, possibly spilling fuel oil within the bay. To assist various government agencies operating on the ground, the Philippine Space Agency hopes to obtain satellite images and mapping to cover the extent of the possible oil spill. Copernicus EMS Rapid Mapping is requested to provide an initial rough estimation, oil spill extent and damage assessment emergency mapping.

Data sources and analysis: Sentinel-2A/B (2024) (acquired on 16/04/2024 at 02:33 UTC, resolution 10.0 m). This image is used as background image.

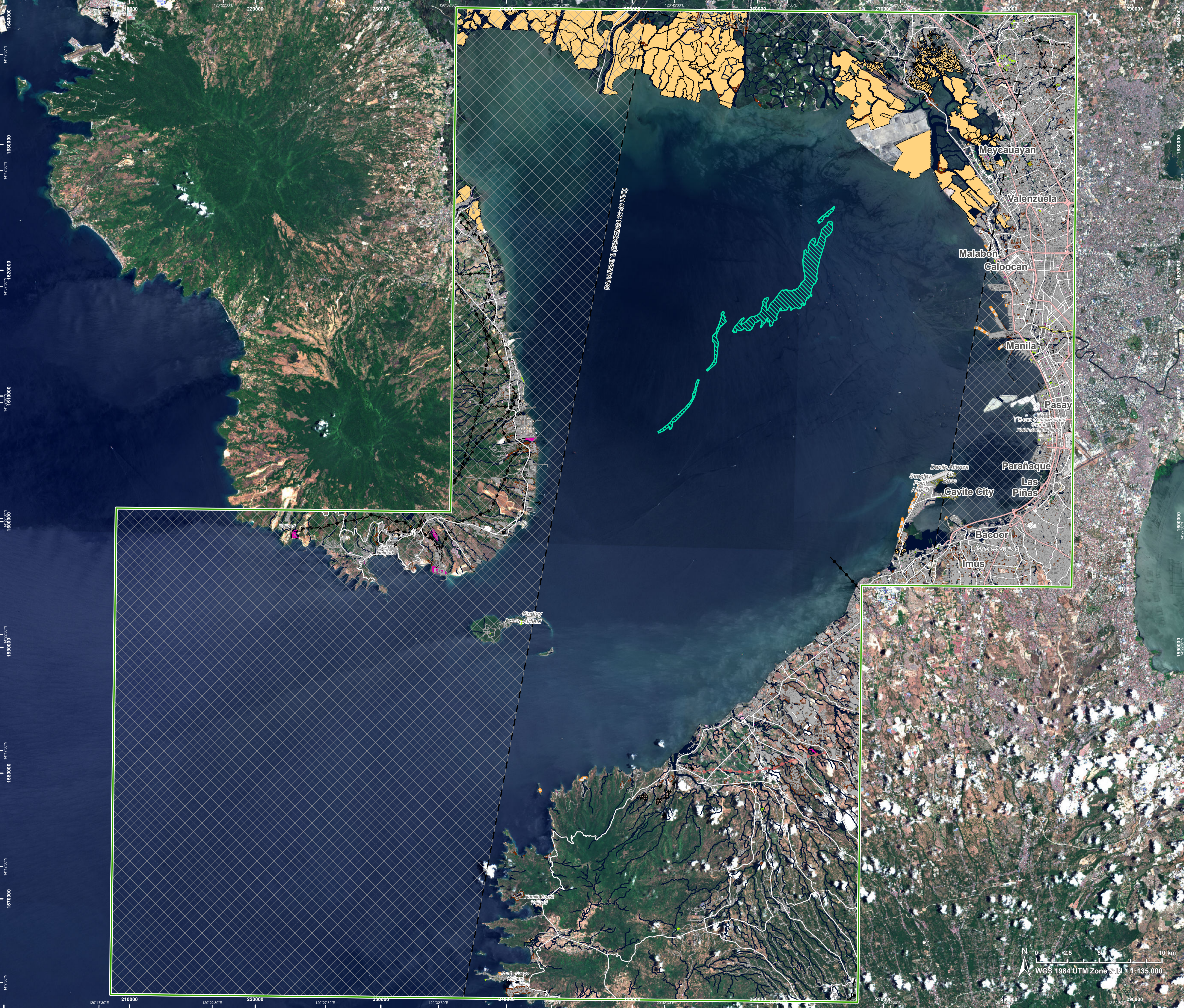
Post-event image: RADARSAT 2 Data and products © MacDonald, Dettwiler and Associates Ltd. (2024) (acquired on 25/07/2024 at 21:40 UTC, resolution 5.0 m).

All images are provided under COPERNICUS by the European Union and ESA, all rights reserved. Image provided by the International Charter (call ID 1027), all rights reserved.

The thematic layer has been derived from post-event satellite image by means of visual interpretation. Please be aware that the thematic accuracy might be lower in urban and forested areas due to inherent limitations of the SAR analysis technique.

Map produced by GAF AG released by SERTIT on the 26/07/2024.

Details on this activation and service conditions available through the QR code or at the link: <https://rapidmapping.emergency.copernicus.eu/EMSR741>



Consequences within the AOI		Unit of measurement	Affected	Total in AOI
Oil Spill		ha		1,500.9
Estimated population	Number of inhabitants		NA	7,200 Mio.
Built-up	Residential Buildings	ha	0	3,467.3
	Office buildings	ha	0	282.6
	Wholesale and retail trade buildings	ha	0	145.4
	Industrial buildings	ha	0	1,884.2
	School, university and research buildings	ha	0	577.2
	Hospital or institutional care buildings	ha	0	37.7
	Military	ha	0	108.3
Transportation	Cemetery	ha	0	306.0
	Airfield runways	ha	0	204.9
	Helipad	ha	0	2.4
	Airfield runways	km	0	13.4
	Highways	km	0	304.3
	Primary Road	km	0	460.2
	Secondary Road	km	0	520.0
	Local Road	km	0	6,771.8
	Railway Yard	km	0	3.3
	Subway	km	0	6.1
Facilities	Long-distance railways	km	0	125.6
	Settling Basin	ha	0	22.8
	Breakwater	ha	0	7.1
	Dams	ha	0	1.8
	Constructions for mining or extraction	ha	0	73.3
	Power plant constructions	ha	0	235.3
	Sport and recreation constructions	ha	0	252.4
	Other civil engineering works not elsewhere classified	ha	0	13,629.7
	Long-distance pipelines, communication and electricity lines	km	0	342.0
	Local pipelines and cables	km	0	26.7
	Breakwater	km	0	7.8
Land use	Dams	km	0	0.1
	Other	ha	1,500.9	348,059.4
	Heterogeneous agricultural areas	ha	0	24,014.3
	Forests	ha	0	55,518.5
	Shrub and/or herbaceous vegetation association	ha	0	717.4
	Open spaces with little or no vegetation	ha	0	58.4
	Inland wetlands	ha	0	8,973.3

Disclaimer:

Full disclaimer and other helpful information available in the online manual:
<https://emergency.copernicus.eu/mapping/ems/online-manual-rapid-mapping-products>
 © European Union / Copernicus Emergency Management Service

Data Access:

All data displayed on the map(s), as well as the Physiography and Land Use - Land Cover layers, are available in the Crisis Information Package and the Base Layer Package (for reference data). The table above is available in editable format in the Crisis Information Package. All products and data are also available for download on the portal.

Access to the portal



Estimated Population:

Estimated population is based on Copernicus Global Human Settlement Layer (GHSL) dataset. Additional population datasets and analysis are available in the summary table.

Data Sources:

Base Vector Layers: OpenStreetMap © OpenStreetMap contributors (2024), Wikimapia.org, GeoNames 2015, Global Administrative Areas (2012), refined by the producer, Copernicus Global Land Service: Land Cover (2019). Inset maps: JRC 2013, Natural Earth 2012, GeoNames 2015. Digital Elevation Model: COP-DEM-EEA-10-R product © DLR e.V. (2014-2018) and © Airbus Defence and Space GmbH (2020) provided under COPERNICUS by the European Union and ESA, all rights reserved.