


29 February 2024

# PRELIMINARY SATELLITE-DERIVED IMPACT ASSESSMENT



Bab al-Mandab Strait, Southern Red Sea

 Status: No visible impact on the coastal area

 Further action(s): continue monitoring



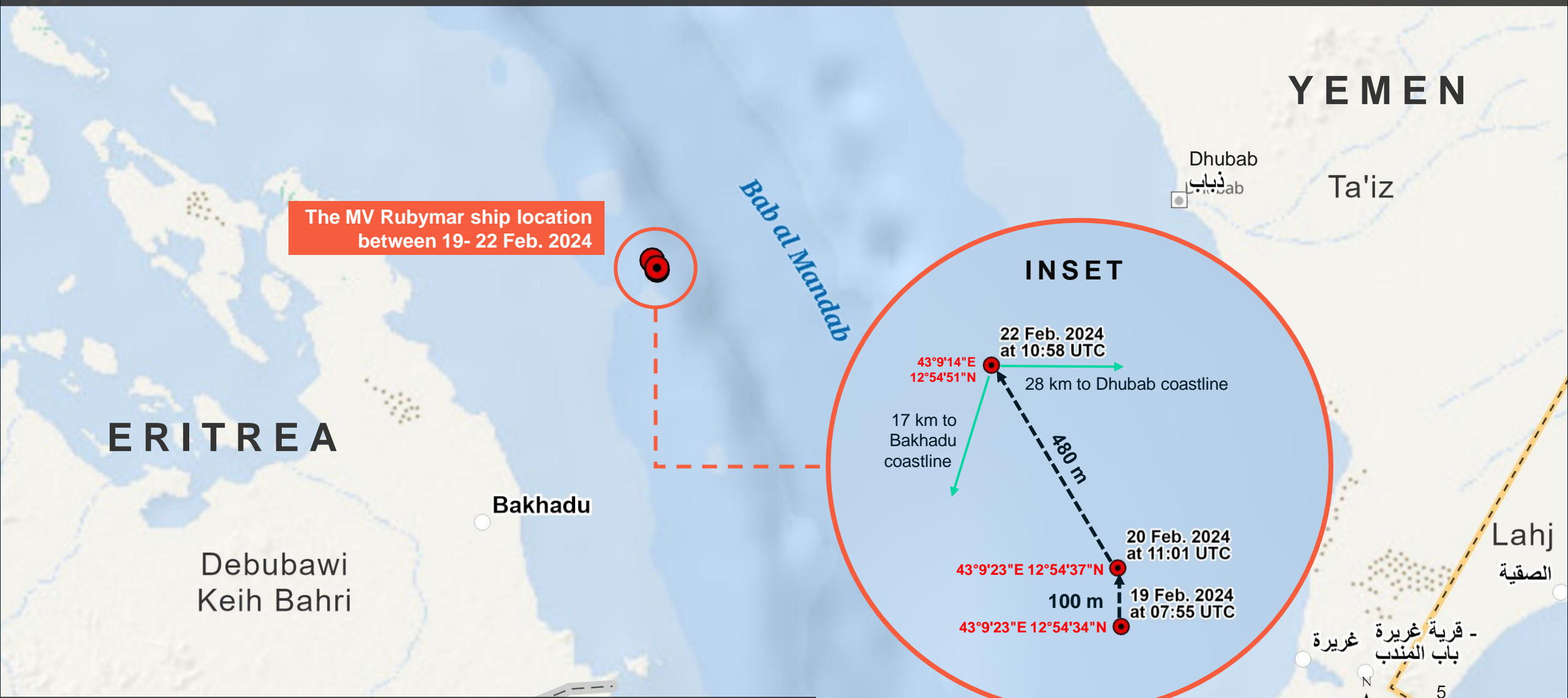
# Southern Red Sea

29 February 2024



 Area of interest

# THE MV RUBYMAR SHIP LOCATION IN BAB AL-MANDAB STRAIT, SOUTHERN RED SEA



The MV Rubymar ship location  
between 19- 22 Feb. 2024

INSET



# BAB AL-MANDAB STRAIT, SOUTHERN RED SEA

Potential oil slick observed



The MV Rubymar ship as of 20 Feb. 2024

43°9'23"E 12°54'37"N

27 km to Dhubab coastline

16 km to Bakhadu coastline



Potential oil slick

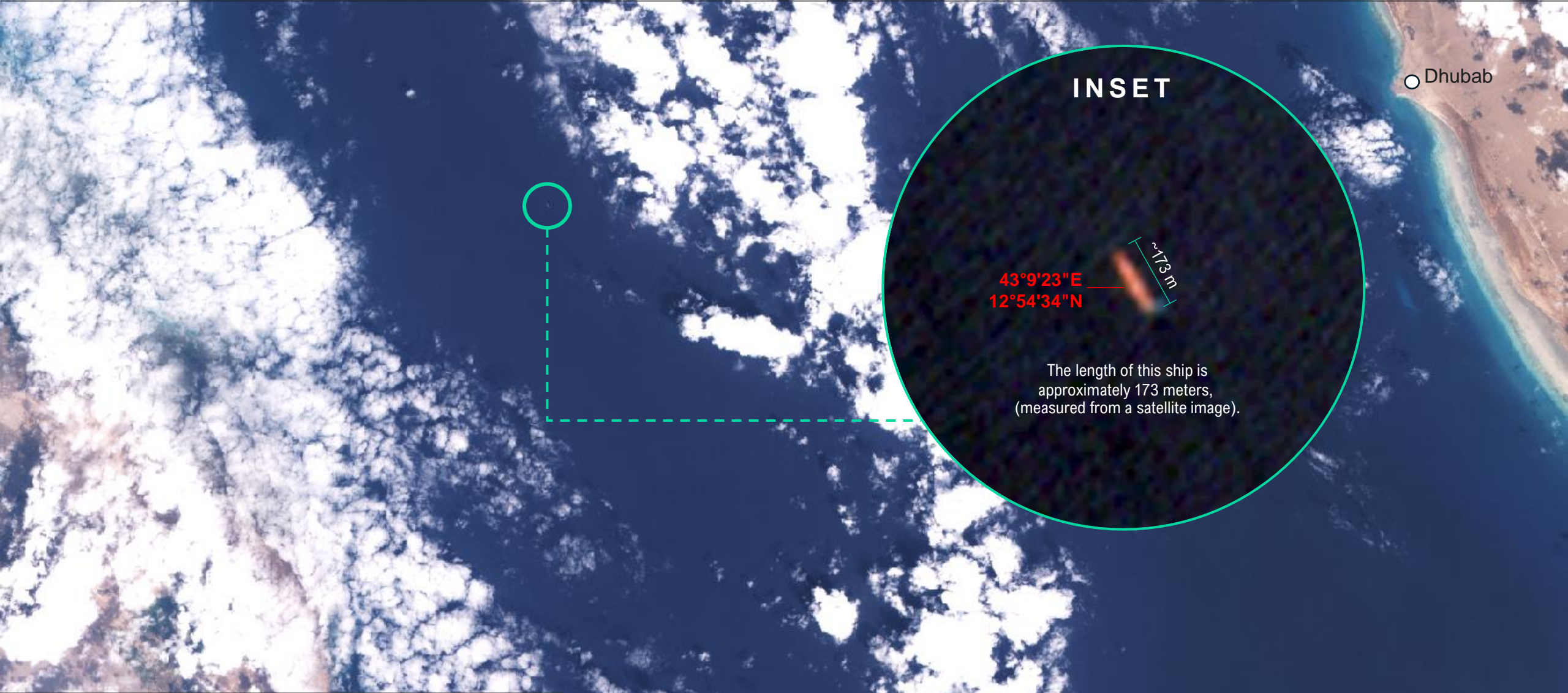


SKYSAT 8 image acquired on 20 February 2024, 00:00 UTC  
Ship coordinate : 43°9'52"E 12°54'42"N



# BAB AL-MANDAB STRAIT, SOUTHERN RED SEA

No evidences of oil spill and released fertilizer



INSET

43°9'23"E  
12°54'34"N

~173 m

The length of this ship is approximately 173 meters, (measured from a satellite image).

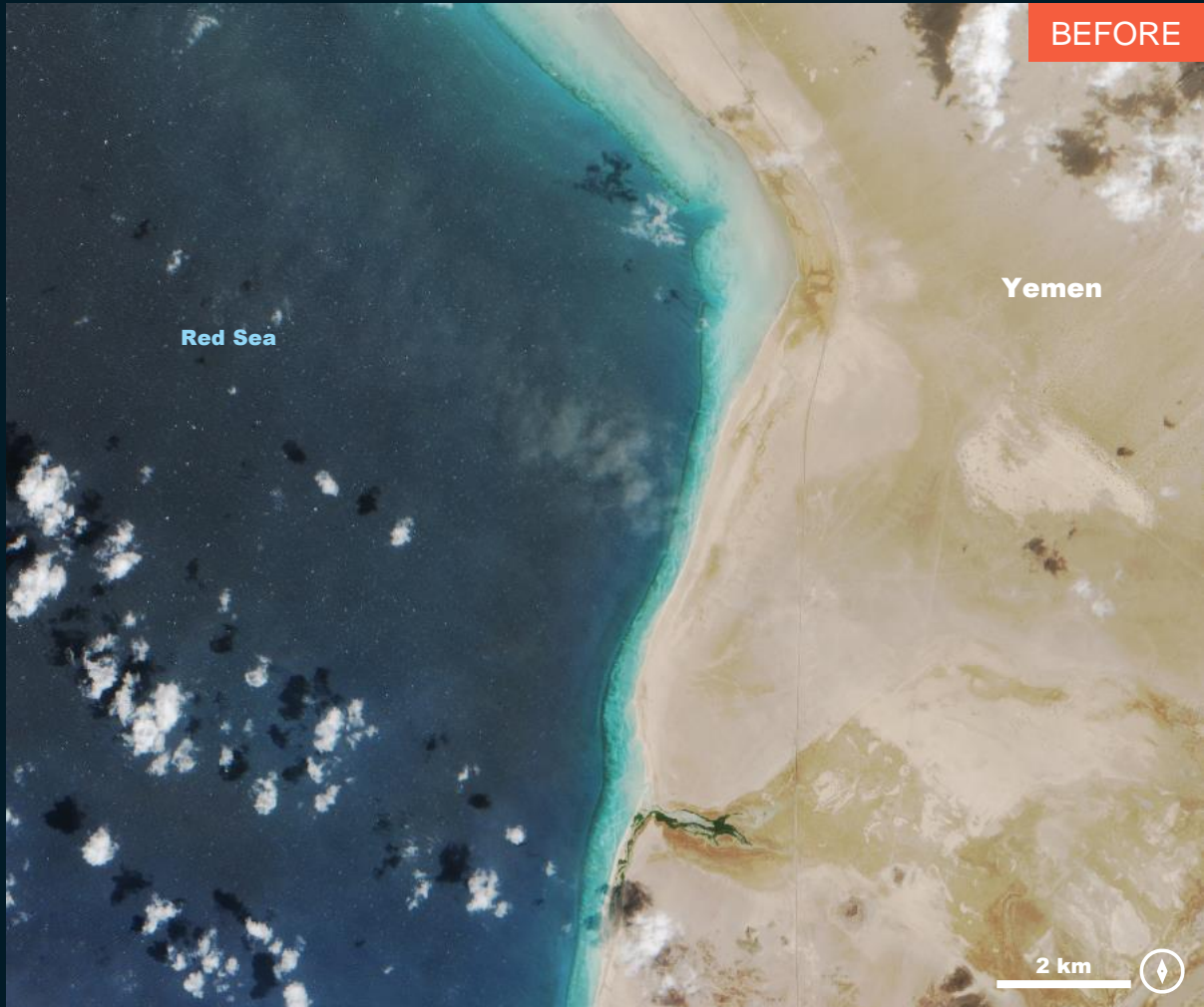
Dhubab



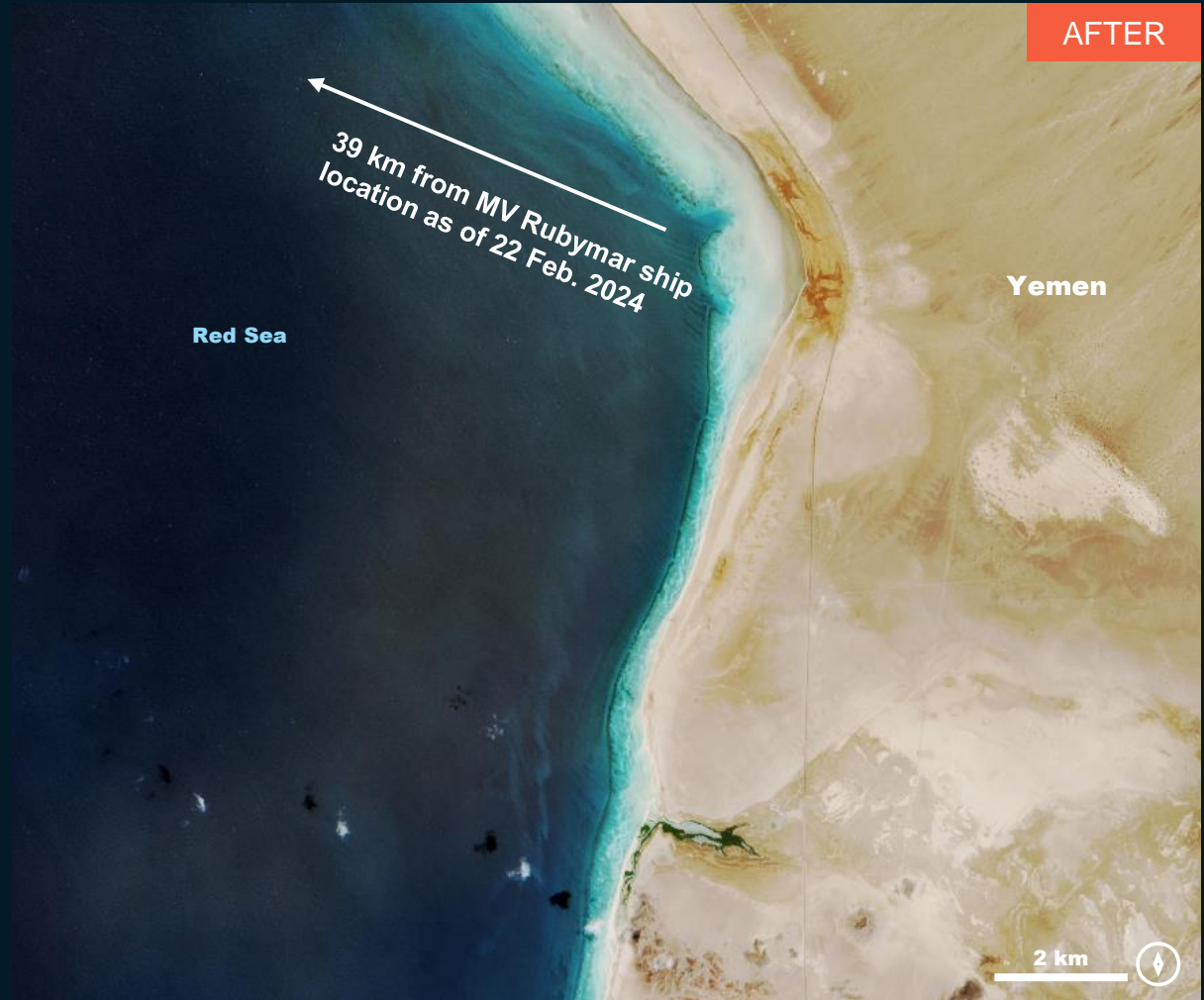
# BAB AL-MANDAB STRAIT, SOUTHERN RED SEA

No major damage to the coastal area

Image center:  
43°28'53"E  
12°47'12"N



Sentinel-2 / 14 February 2024



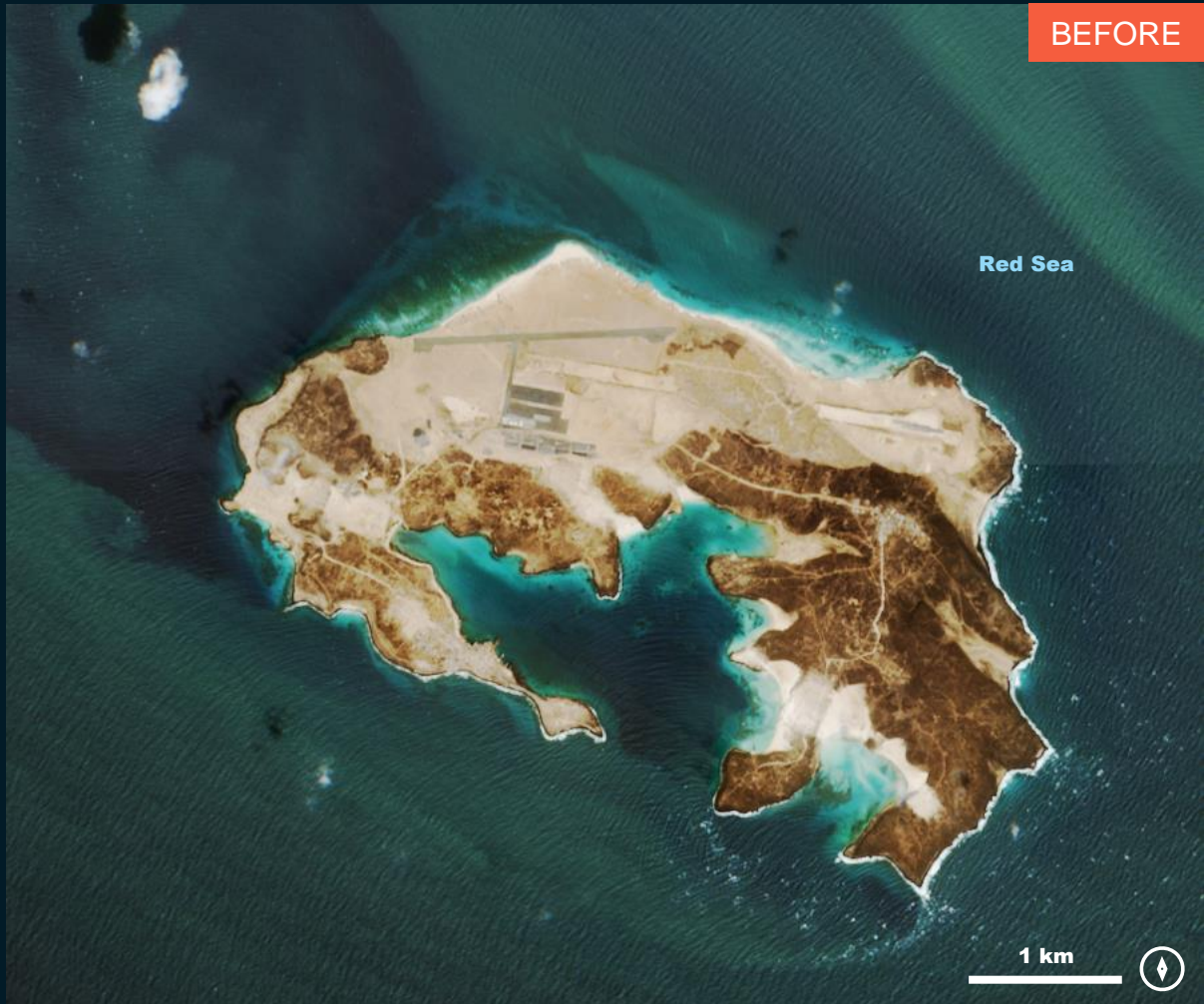
Sentinel-2 / 24 February 2024



# BAB AL-MANDAB STRAIT, SOUTHERN RED SEA

No major damage to the coastal area

Image center:  
43°24'46"E  
12°39'35"N



Sentinel-2 / 09 February 2024



Sentinel-2 / 24 February 2024



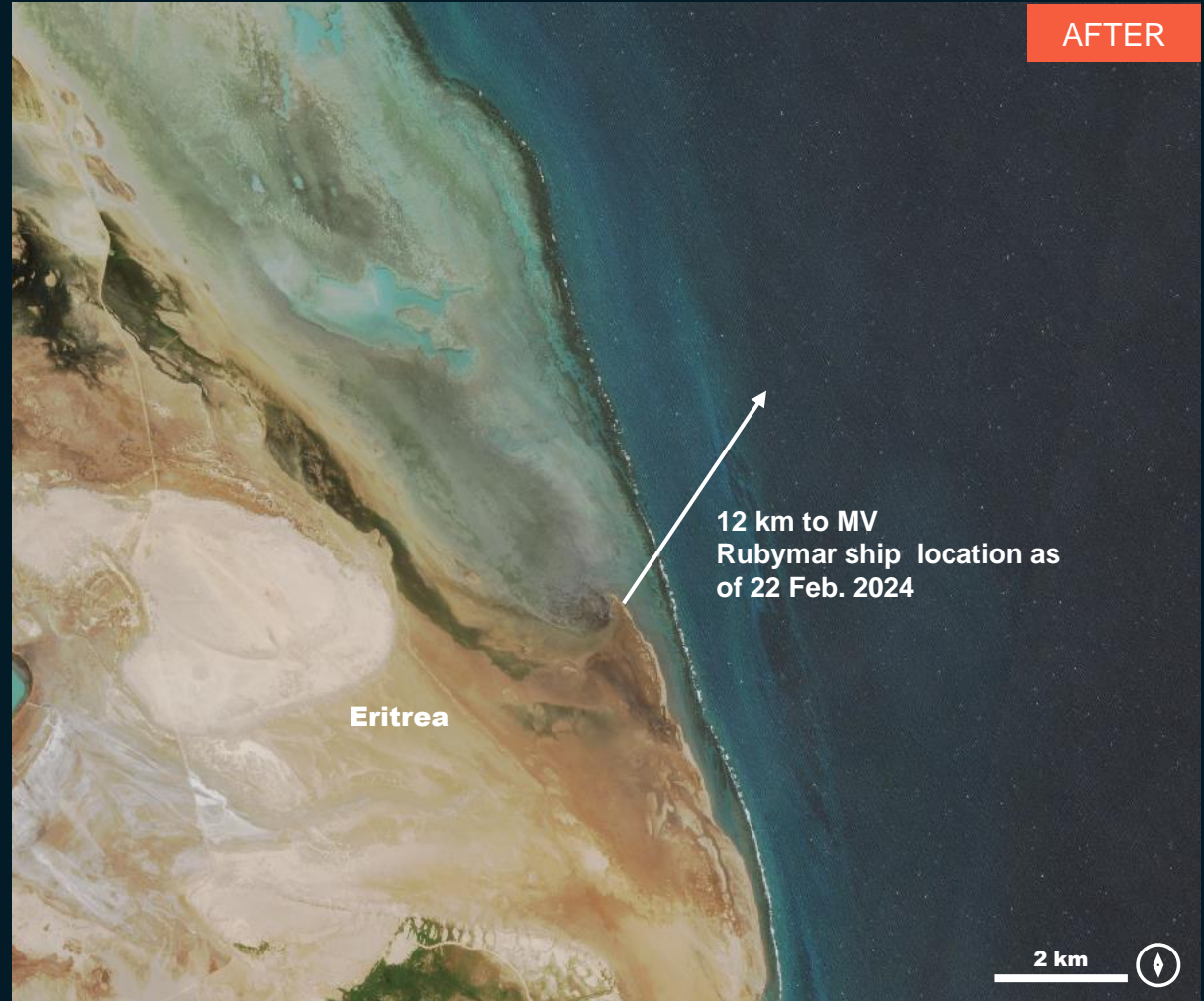
# Bab al-Mandab Strait, Southern Red Sea

No major damage to the coastal area

Image center:  
43°4'53"E  
12°50'41"N



Sentinel-2 / 09 February 2024



Sentinel-2 / 24 February 2024



# SUMMARY OF FINDINGS

---

- The MV Rubymar ship has been observed in the Southern Red Sea about 28 km west of the Yemeni town of Dhubab, and about 17 km north-east Bakhadu coastal line in Eritrea as of 22 February 2024;
- No evidences of oil spill and released fertilizer in the Southern Red Sea as of 19 February 2024;
- Potential floating oil slick is observed in the Southern Red Sea as of 20 February 2024;
- No visible impact on the Yemeni, Djiboutian and Eritrean coasts as of 24 February 2024.



# COPYRIGHTS & SOURCES

## Data sources:

(1) Satellite Image (Post-event): CBERS-4a Satellite  
Acquisition date : 19 February 2024  
Resolution: 16 m  
Copyright: (2024) INPE  
Source: INPE

(2) Satellite Image (Post-event): SkySat 8  
Acquisition date : 20 and 22 February 2024  
Resolution: 50 cm  
Copyright: © Planet Labs Inc. (2024)  
Source: USGS / HDDS

(3) Satellite Image (Post-event): Sentinel-2  
Acquisition date : 24 February 2024  
Resolution: 10 m  
Copyright: Contains modified Copernicus Sentinel data [2024]  
Source: ESA

(4) Satellite Image (Pre-event): Sentinel-2  
Acquisition date : 9 and 14 February 2024  
Resolution: 10 m  
Copyright: Contains modified Copernicus Sentinel data [2024]  
Source: ESA

(5) Ancillary data  
Administrative boundaries: OCHA ROSEA, FEWS, OCHA FISSNatural  
EarthNatural Earth and Central Statistical Organization (CSO)  
Populated place: OSM

Analysis: United Nations Satellite Centre (UNOSAT)  
Production: United Nations Satellite Centre (UNOSAT)



 **@UNOSAT**

 **@UNITAR.unosat**

 **/UNOSAT**



**UNOSAT**, United Nations Institute for Training  
and Research (UNITAR)  
7 bis, Avenue de la Paix, CH-1202 Geneva 2,  
Switzerland

T +41 22 917 4720  
E [unosat@unitar.org](mailto:unosat@unitar.org)  
[www.unosat.org](http://www.unosat.org)