



7 Nov. 2023

# PRELIMINARY SATELLITE- DERIVED DAMAGE ASSESSMENT JAJARKOT EARTHQUAKE (3 Nov 2023, M 5.7)






Kuse, Barekot and Bheri Municipalities, Jajarkot District, Karnali Province, Nepal

 Status: No major damage observed

 Further action(s): Full assessment to be conducted

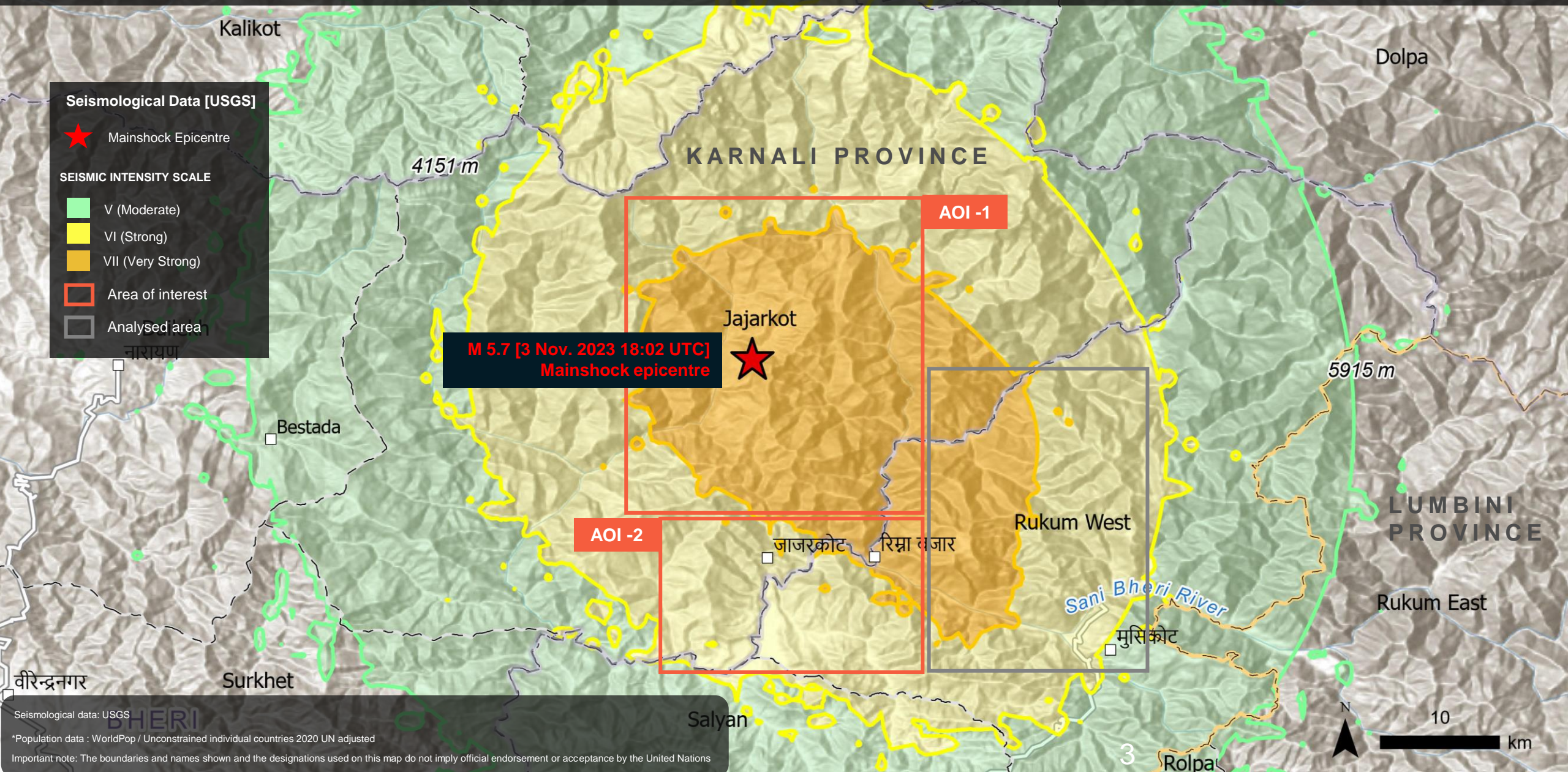
# NEPAL

7 Nov. 2023

-  AREA OF INTEREST (AOI)
-  PROVINCE BOUNDARY
-  MAINSHOCK EARTHQUAKE EPICENTRE (3 NOVEMBER 2023, M 5.7)



# M 5.7 JAJARKOT EARTHQUAKES, NEPAL OF 3 NOVEMBER 2023 (18:02 UTC)



Seismological data: USGS  
\*Population data: WorldPop / Unconstrained individual countries 2020 UN adjusted  
Important note: The boundaries and names shown and the designations used on this map do not imply official endorsement or acceptance by the United Nations

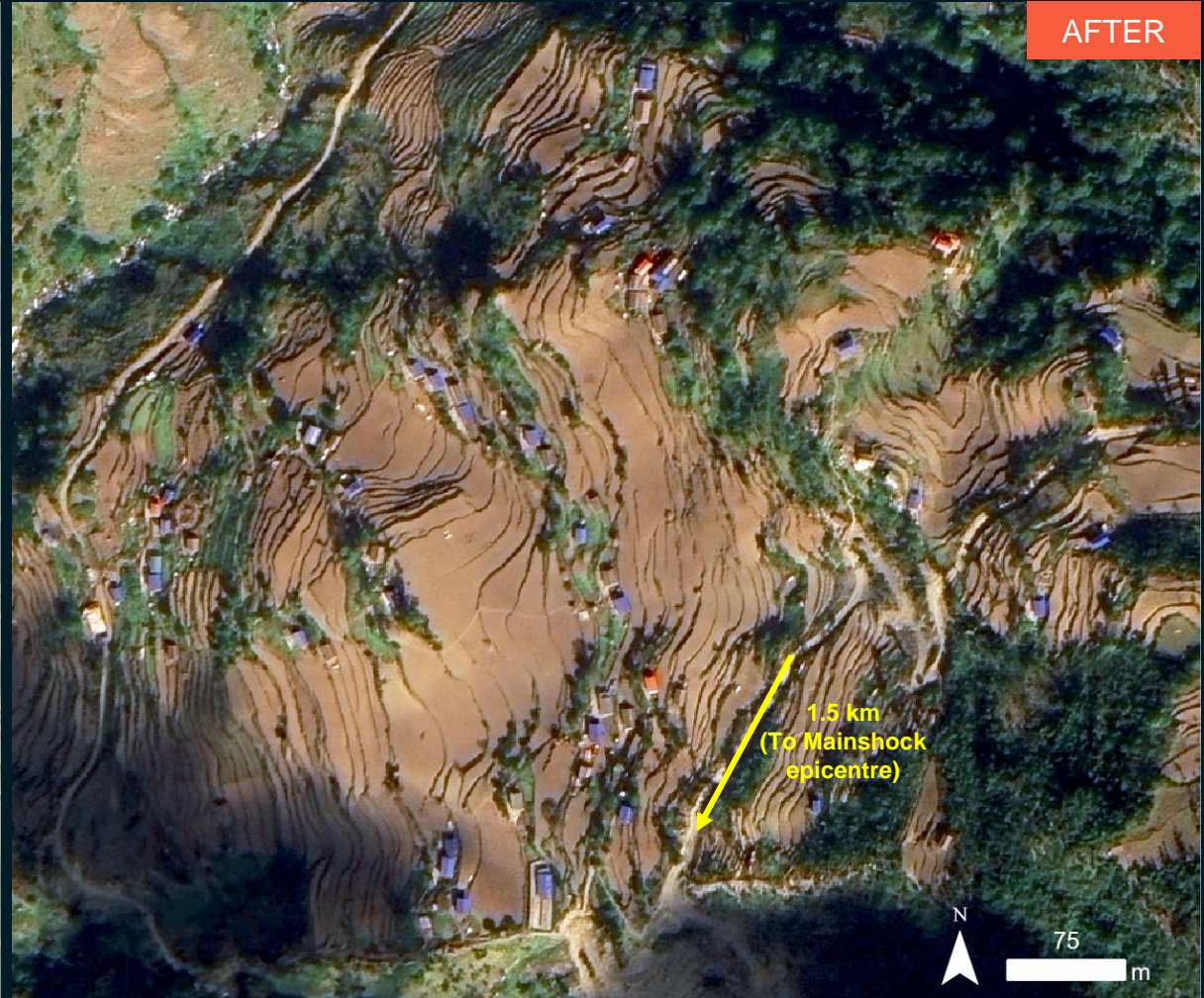
# AOI 1 – 1 Kuse Municipality, Jajarkot District, Karnali Province

No major damage

Image center:  
82°11'53"E  
28°51'30"N



Worldview-2 / 04 December 2014



Jilin-1/ 5 November 2023

# AOI 1 – 2 Kuse Municipality, Jajarkot District, Karnali Province

Landslide observed & no major damage

Image center:  
82°17'19"E  
28°51'27"N



Worldview-3 / 03 November 2021



Jilin-1/ 5 November 2023

# AOI 1 – 3 Kuse Municipality, Jajarkot District, Karnali Province

Landslide observed & no major damage

Image center:  
82°17'41"E  
28°51'43"N



Worldview-3 / 03 November 2021



Jilin-1/ 5 November 2023

# AOI 1 – 4 Sepukhola Village, Barekot Municipality, Jajarkot District, Karnali Province

No major damage

Image center:  
82°17'23"E  
28°52'54"N



Worldview-3 / 3 November 2021

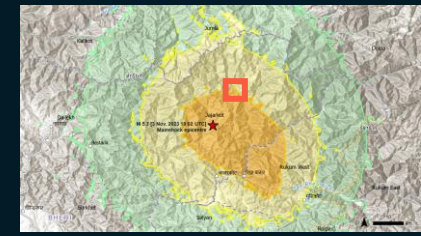


Jilin-1/ 5 November 2023

# AOI 1 – 5 Barekot Municipality, Jajarkot District, Karnali Province

Potentially damaged structure

Image center:  
82°15'1"E  
28°56'41"N



Worldview-3 / 3 November 2021



Jilin-1/ 5 November 2023



# AOI 2 – 1 Bheri Municipality, Jajarkot District, Karnali Province

Potentially damaged structure

Image center:  
82°12'41"E  
28°41'44"N



Worldview-2 / 01 March 2013



Pléiades / 6 November 2023

# AOI 2 -2 Bheri Municipality, Jajarkot District, Karnali Province

No major damage

Image center:  
82°10'41"E  
28°37'58"N



Worldview-2 / 01 March 2013



Pléiades / 6 November 2023

# summary of findings

---

- No major damage to structures could be observed in Kuse, Barekot and Bheri Municipalities, Jajarkot District, Karnali Province as of 5 and 6 November 2023;
- Landslides observed in Kuse Municipality, Jajarkot District, Karnali Province as of 5 November 2023.

# COPYRIGHTS & SOURCES

## Data sources:

(1) Satellite Image (Post-event): Pléiades

Acquisition date : 6 November 2023

Resolution: 50cm

Copyright: Includes Pleiades material © AIRBUS DS (2023)

Source: Airbus D&S

(2) Satellite Image (Post-event): Jilin-1

Resolution: 65 cm

Copyright: Chang Guang Satellite Technology Co., Ltd.

Source : Chang Guang Satellite Technology Co., Ltd.

(CGSTL), Collaborated network on Disaster Data Response

(CDDR), Aerospace Information Research Institute of the

Chinese Academy of Sciences (AIR) and Open Disaster

Data Chain of the Chinese Academy of Sciences (ODDC)

Analysis: United Nations Satellite Centre (UNOSAT)

Production: United Nations Satellite Centre (UNOSAT)

(3) Satellite Image (Pre-event): ESRI Basemap

(4) Ancillary data

Administrative boundaries: Survey Department of Nepal (<http://ngiip.gov.np/index.php>),

UN Resident Coordinators Office in Nepal (<https://un.org.np/>)

Populated place: OpenStreetMap

Analysis: United Nations Satellite Centre (UNOSAT)

Production: United Nations Satellite Centre (UNOSAT)

 **@UNOSAT**

 **@UNITAR.unosat**

 **/UNOSAT**



**UNOSAT**, United Nations Institute for Training  
and Research (UNITAR)  
7 bis, Avenue de la Paix, CH-1202 Geneva 2,  
Switzerland

T +41 22 917 4720  
E [unosat@unitar.org](mailto:unosat@unitar.org)  
[www.unosat.org](http://www.unosat.org)