



14 Mar. 2022

TROPICAL CYCLONE GOMBE-22 PRELIMINARY SATELLITE-DERIVED FLOOD ASSESSMENT



Nampula Province, Mozambique

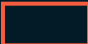
 Status: Inundated road and inundated structures observed

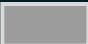
 Further action(s): Continue monitoring



MOZAMBIQUE




 Area of interest

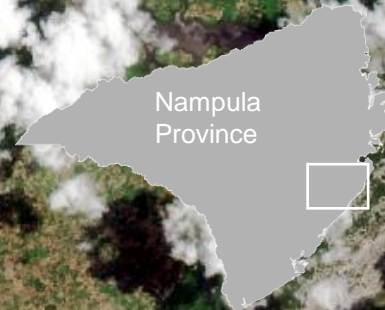
 Province boundary

AOI-1 NAMIGE POSTO, MOGINCUAL DISTRICT, NAMPULA PROVINCE




Flood waters along the Mogincual river and inundated road

 Flood waters



INSET

See inset for close view

Inundated road 

Mogincual river

Mogincual



Sentinel-2 image acquired on 13 March 2022
Image Center :40°20'30.421"E 15°33'37.859"S

AOI1-1 NAMIGE POSTO, MOGINCUAL DISTRICT, NAMPULA PROVINCE

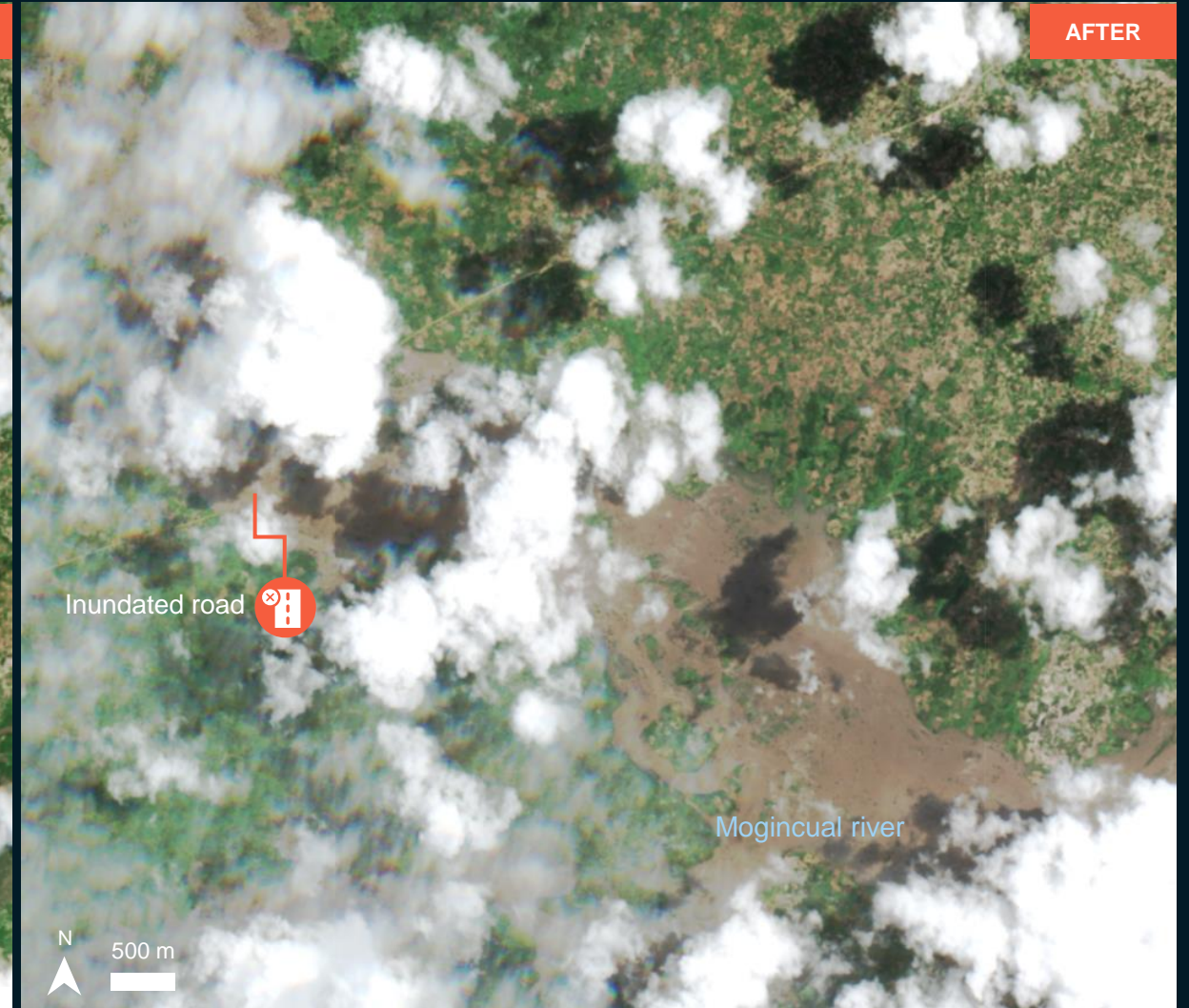
Image center:
40°21'34.952"E
15°35'21.363"S



Flood waters along the Mogincual river



Sentinel-2 / 5 Mar. 2022

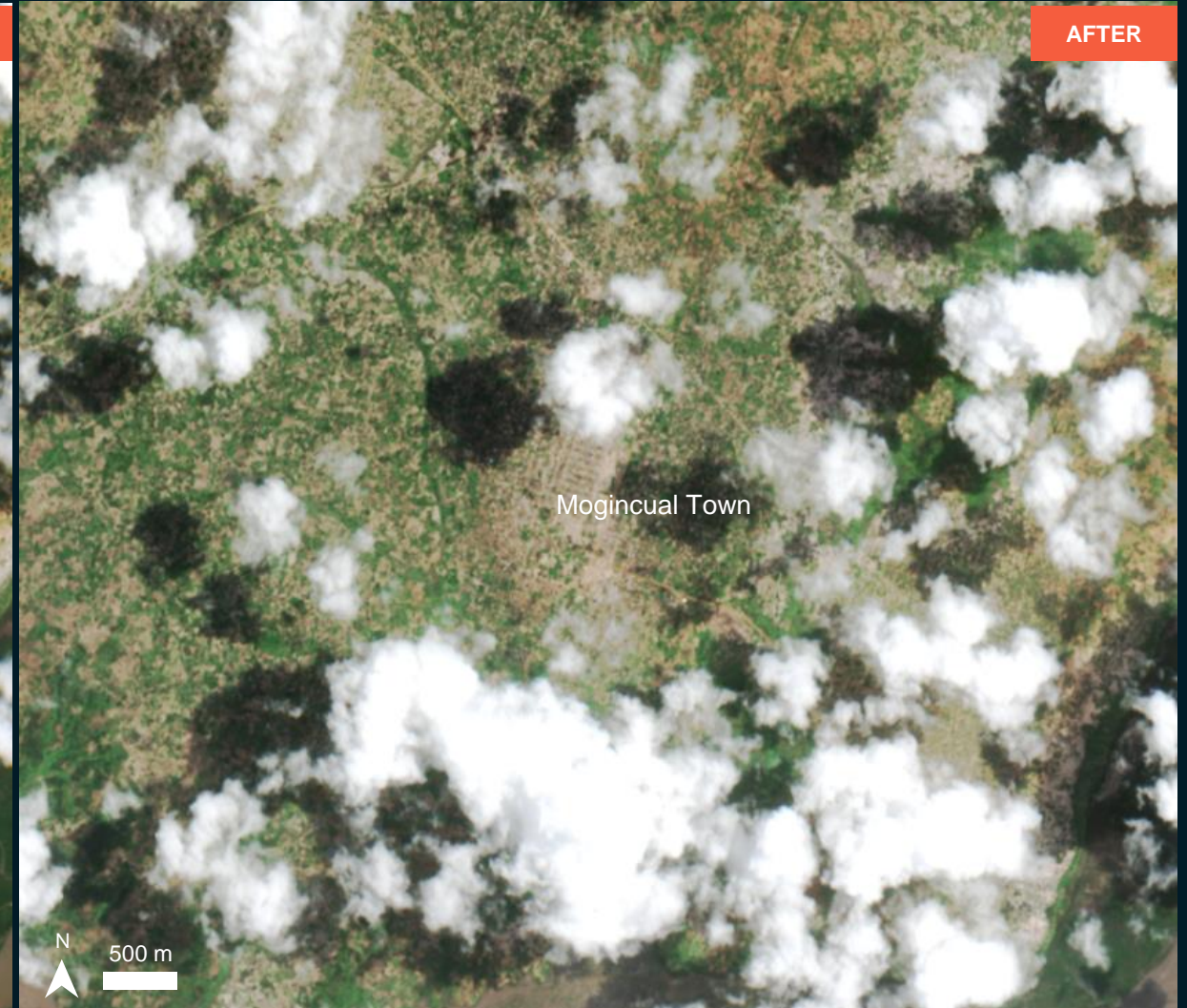
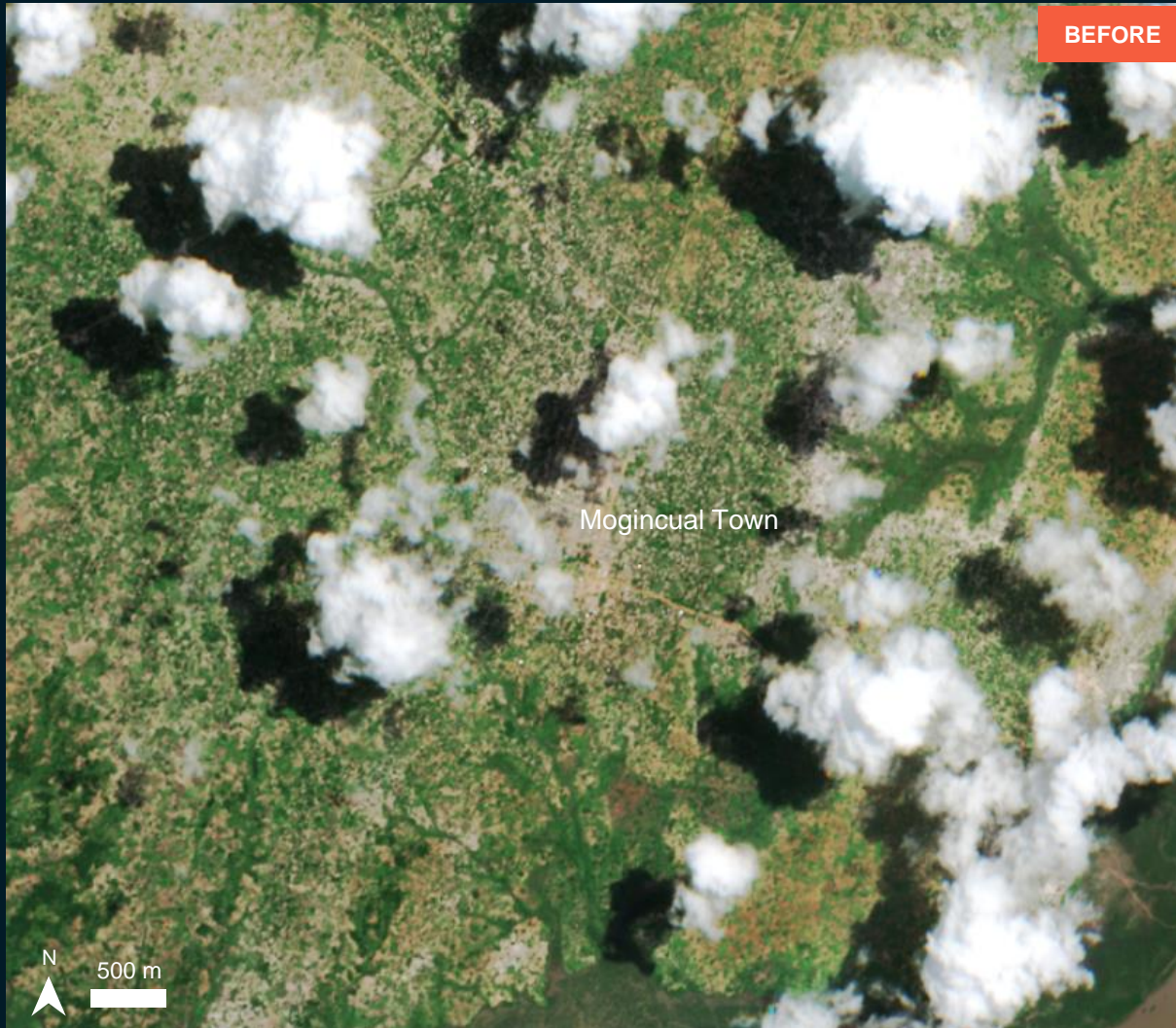


Sentinel-2 / 13 Mar. 2022

AOI1-2 MOGINCUAL TOWN, NAMIGE POSTO, MOGINCUAL DISTRICT, NAMPULA PROVINCE

No major floods observed in Mogincual Town

Image center:
40°24'33.999"E
15°34'3.965"S



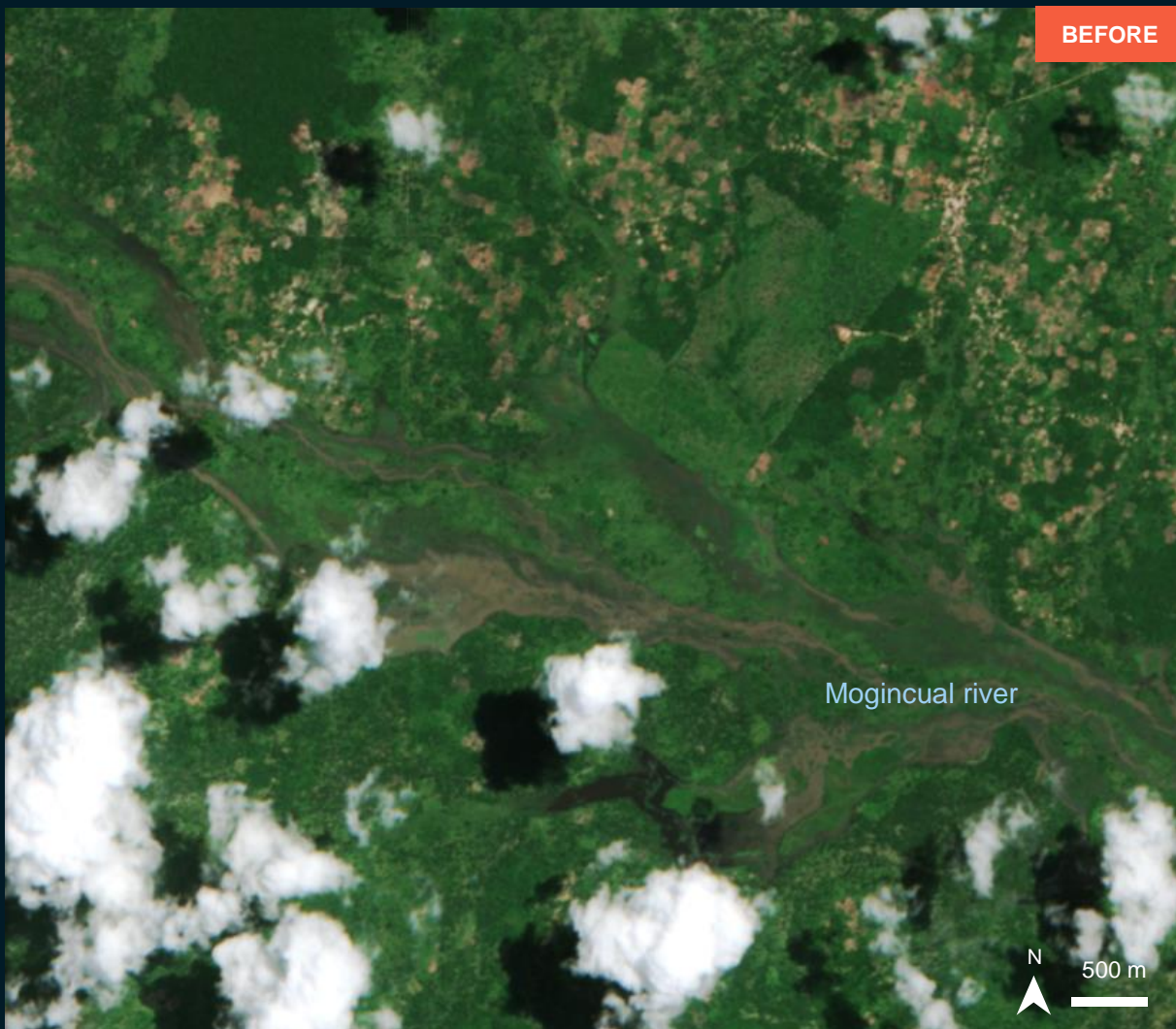
Sentinel-2 / 5 Mar. 2022

Sentinel-2 / 13 Mar. 2022

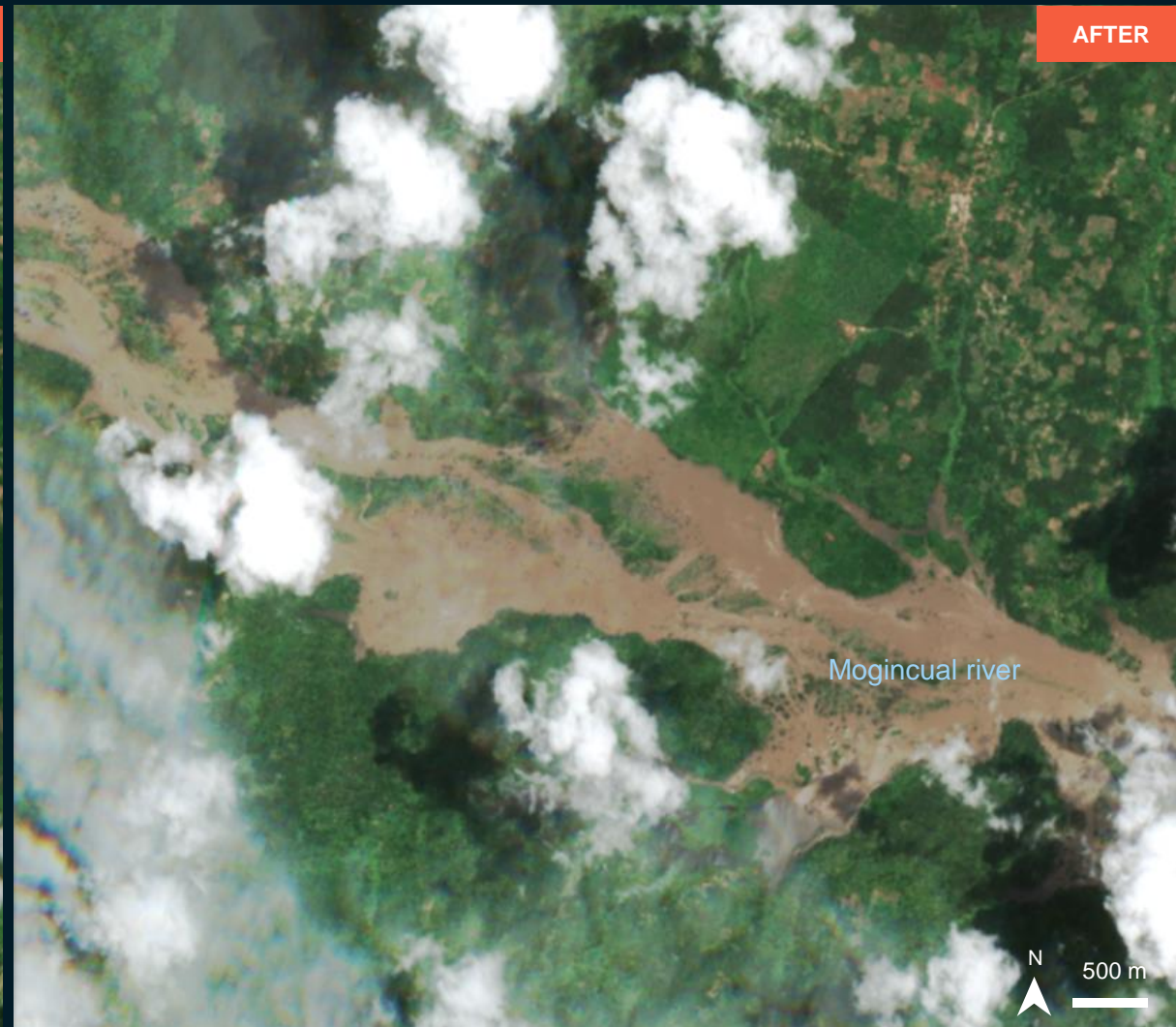
AOI1-3 NAMIGE POSTO, MOGINCUAL DISTRICT, NAMPULA PROVINCE

Flood waters along the Mogincual river

Image center:
40°15'46.126"E
15°30'40.779"S



Sentinel-2 / 5 Mar. 2022



Sentinel-2 / 13 Mar. 2022

AOI-2 NAMPULA CITY, CIDADE DE NAMPULA POSTO, CIDADE DE NAMPULA DISTRICT, NAMPULA PROVINCE

No major floods observed in cloud free areas



UNOSAT



Nampula

N



1 km

Sentinel-2 image acquired on 13 March 2022
Image Center :39°16'13.202"E 15°7'11.741"S

AOI-3 MOSSURIL DISTRICT, NAMPULA PROVINCE



Flood waters along the river and inundated roads



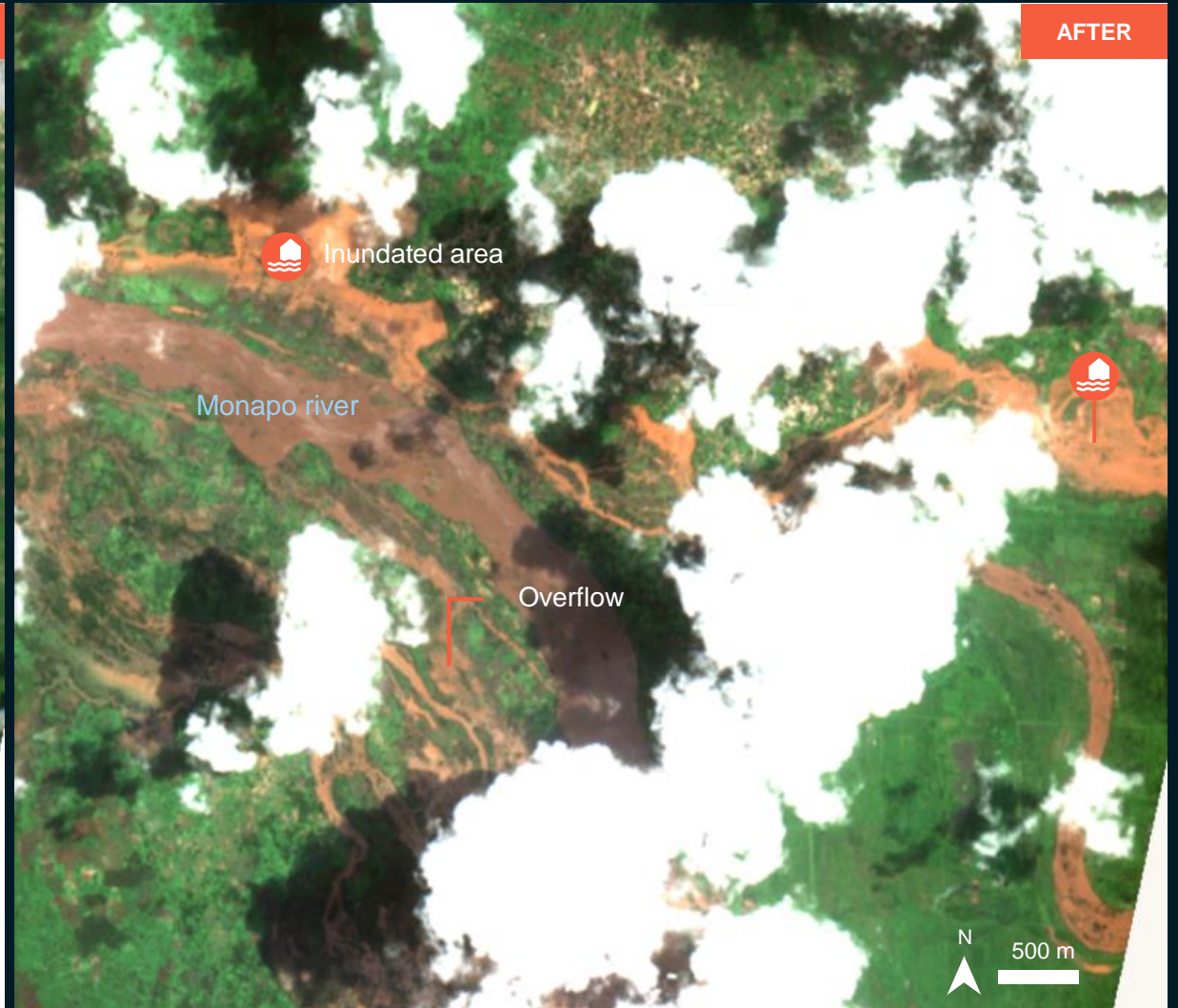
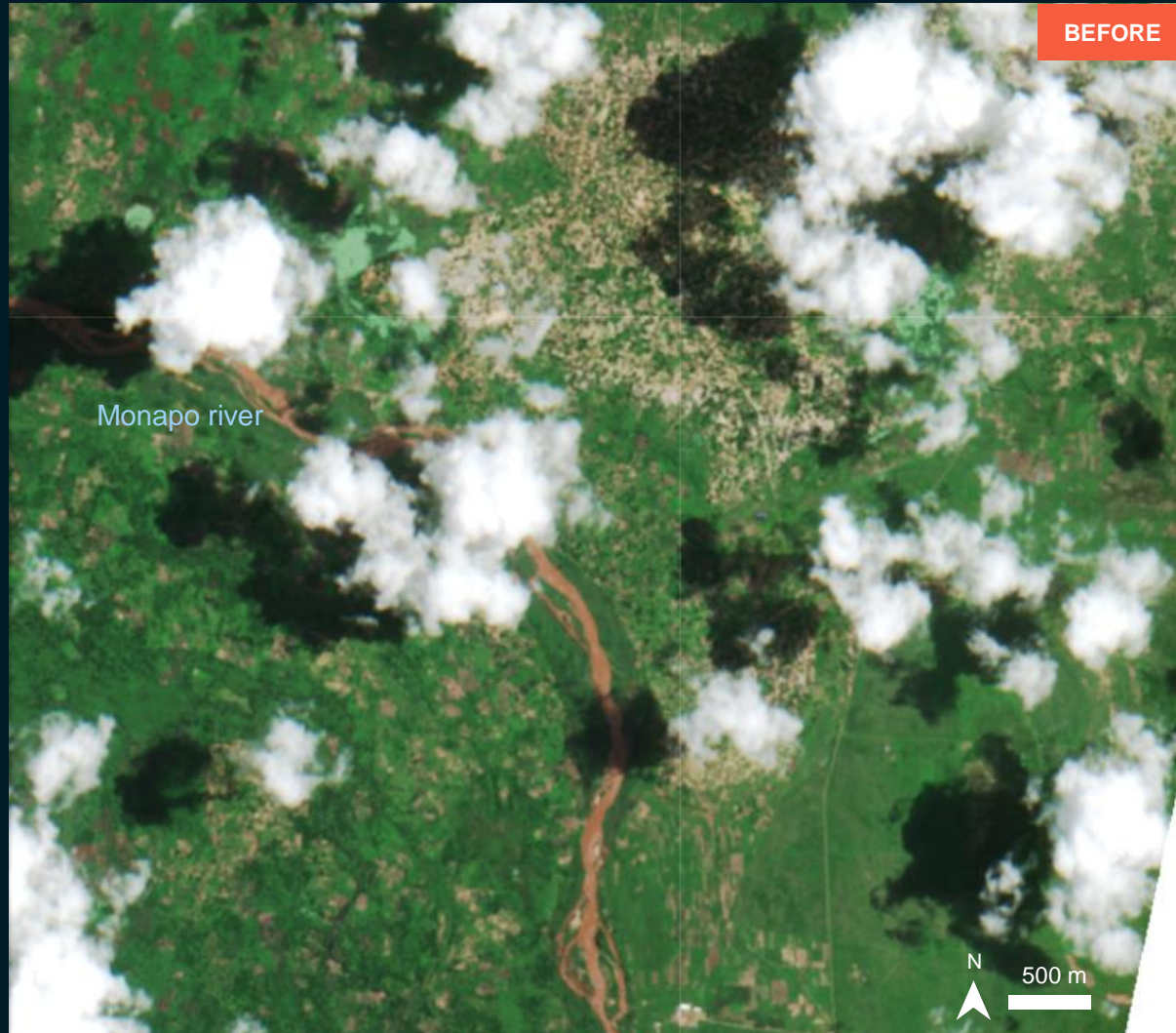
Sentinel-2 image acquired on 13 March 2022
Image Center :40°32'40.094"E 15°1'50.651"S

AOI3-1 MOSSURIL DISTRICT, NAMPULA PROVINCE

Image center:
40°33'33.121"E
15°2'32.228"S



Flood waters along the Monapo river



Sentinel-2 / 8 Mar. 2022

Sentinel-2 / 13 Mar. 2022

AOI3-2 MOSSURIL DISTRICT, NAMPULA PROVINCE

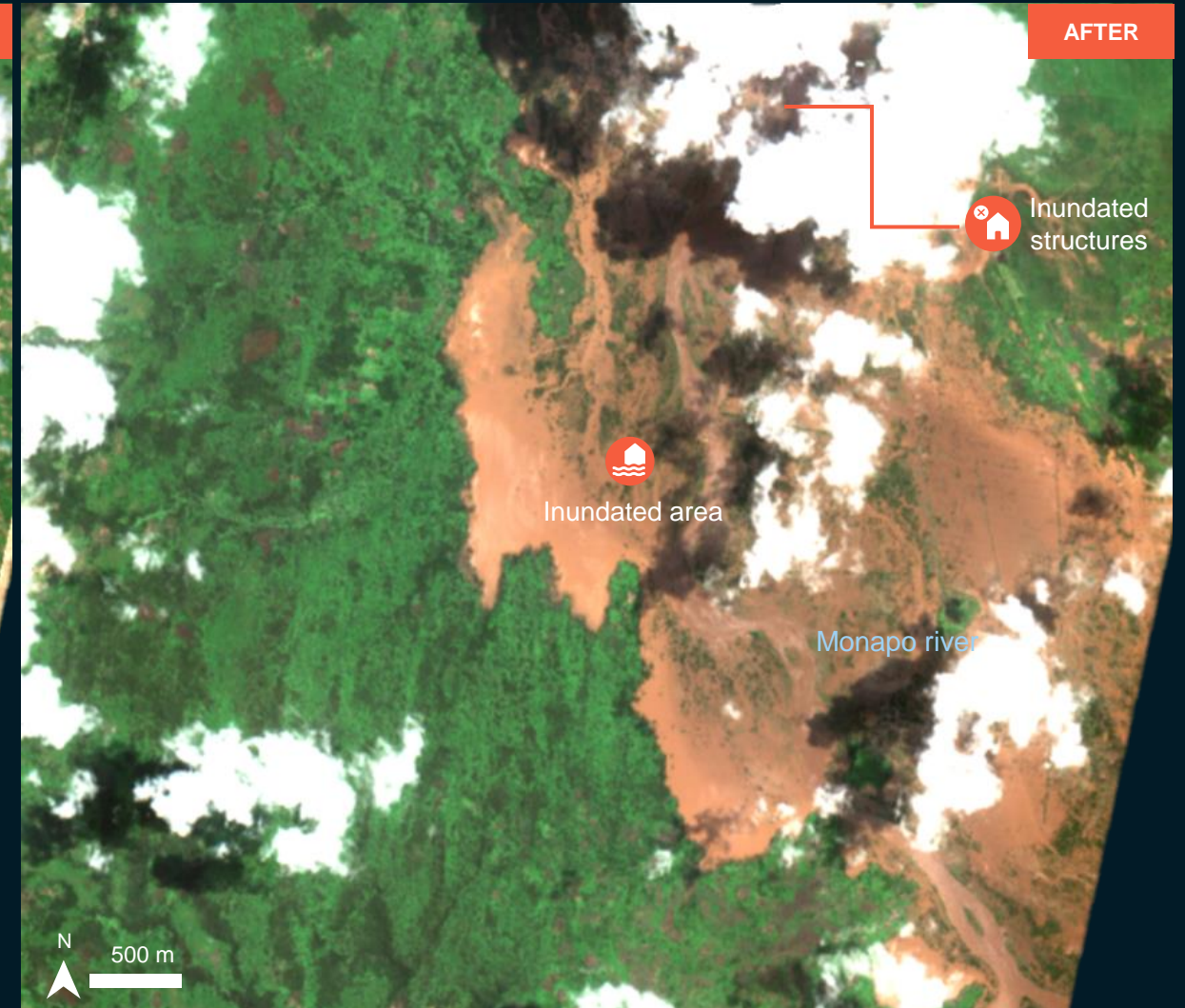
Image center:
40°32'52.072"E
15°5'28.62"S



Flood waters along the Monapo river



Sentinel-2 / 8 Mar. 2022



Sentinel-2 / 13 Mar. 2022

SUMMARY OF FINDINGS

- Flood waters observed along the Mogincual river, Namige Posto, Mogincual District, Nampula Province as of 13 March 2022;
- Flood waters observed along the Monapo river, Mossuril District, Nampula Province as of 13 March 2022;
- Inundated roads and inundated structures observed in Mossuril District, Nampula Province as of 13 March 2022;
- Inundated road observed in Namige Posto, Mogincual District, Nampula Province as of 13 March 2022
- No major floods observed in cloud free zones over Nampula City, Cidade De Nampula Posto, Cidade De Nampula District, Nampula Province as of 13 March 2022

COPYRIGHTS AND SOURCES



Data sources:

(1) Satellite Image (Post-event)

Satellite : Sentinel-2B at 07:16 UTC

Imagery Date : 13 March 2022

Resolution : 10 m

Copyright: Contains modified Copernicus Sentinel Data [2022]

Source: ESA

(2) Satellite Image (Pre-event)

Satellite : Sentinel-2A

Imagery Date : 5 March 2022 at 07:32 UTC

Imagery Date : 8 March 2022 at 07:17 UTC

Resolution : 10 m

Copyright: Contains modified Copernicus Sentinel Data [2022]

Source: ESA

(3) Ancillary data

Administrative boundaries: Mozambique INE (Instituto Nacional de Estatística)

<http://www.ine.gov.mz/> Census 2007 data from WFP Geonode, cleaned by UN OCHA ROSEA

. Maputo City districts added from SALB boundaries by OCHA

Analysis: United Nations Satellite Centre (UNOSAT)

Production: United Nations Satellite Centre (UNOSAT)

 **@UNOSAT**

 **@UNITAR.unosat**



UNOSAT, United Nations Institute for Training
and Research (UNITAR)
7 bis, Avenue de la Paix, CH-1202 Geneva 2,
Switzerland

T +41 22 917 4720
E unosat@unitar.org
www.unosat.org